

Labratory Centrifuge

INNOVA
The passion for science

Biofermentation & Biopharma

Petrochemical & Energy

Life science

Industry



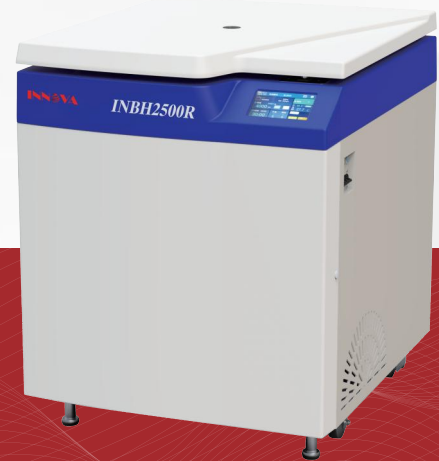
www.innovabiomed.com

INBH2500R/INBH2300R Floor-standing High-Speed Refrigerated Centrifuge	01
INBH2200R/INBH2100R Floor-standing High-Speed Refrigerated Centrifuge	03
INH2500R Floor-standing High-Speed Refrigerated Centrifuge	05
INH2200R/INH2100R Floor-standing High-Speed Refrigerated Centrifuge	07
INGL-25M/INGL-23M Floor-standing High-Speed Refrigerated Centrifuge	09
INGL-22M/INGL-21M Floor-standing High-Speed Refrigerated Centrifuge	11
INGL-20.5M Floor-standing High-Speed Refrigerated Centrifuge	13
INBH1200R Floor-standing High-Speed Refrigerated Centrifuge	15
INH1200R Floor-standing High-Speed Refrigerated Centrifuge	17
INGL-12M Floor-standing High-Speed Refrigerated Centrifuge	19
INCL800R Floor-standing High-Speed Refrigerated Centrifuge	21
INBL800R Floor-standing High-Speed Refrigerated Centrifuge	23
INL800R Floor-standing High-Speed Refrigerated Centrifuge	25
INDL-8M Floor-standing High-Speed Refrigerated Centrifuge	27
INBL600R Floor-standing High-Speed Refrigerated Centrifuge	29
INL600R Floor-standing High-Capacity Refrigerated Centrifuge	31
INDL-6M Floor-standing High-Speed Refrigerated Centrifuge	33
INDL-5M Floor-standing High-Speed Refrigerated Centrifuge	35
IND5B Floor-standing High-Speed Refrigerated Centrifuge	37
INDL-5B Floor-standing High-Capacity Centrifuge	39
IND5M Floor-standing Low Speed Centrifuge	39
INTGL-25M Tabletop High-Speed and High-Capacity Refrigerated Centrifuge	41
INTGL-21M Tabletop High-Speed and High-Capacity Refrigerated Centrifuge	43
INTGL-20.5M Tabletop High-Speed and High-Capacity Refrigerated Centrifuge	45
INTGL-20M Tabletop High-Speed Refrigerated Centrifuge	47
INTGL-18.5M/INTGL-18M Tabletop High-Speed Refrigerated Centrifuge	49
INTGL-16M Tabletop High-Speed Refrigerated Centrifuge	51
INH-18.5R Tabletop High-Speed Refrigerated Centrifuge	53
INH-17.5R Tabletop High-Speed Refrigerated Centrifuge	55
INTGL-17M Tabletop High-Speed Micro-Refrigerated Centrifuge	57
INTGL-16.5M Tabletop High-Speed Micro-Refrigerated Centrifuge	59
INTDL-8A/INTDL-5A Tabletop Low-Speed Micro-Refrigerated Centrifuge	61
INTDL-8M Tabletop Low-Speed Micro-Refrigerated Centrifuge	63

INTDL-5M Tabletop Low-Speed Micro-Refrigerated Centrifuge	65
INL580R Tabletop Low-Speed and High-Capacity Refrigerated Centrifuge	67
INTG21 Tabletop High-Speed and High-Capacity Centrifuge	69
INTG20.5 Tabletop High-Speed and High-Capacity Centrifuge	71
INTG19 Tabletop High-Speed and High-Capacity Centrifuge	73
INH18.5B Tabletop High-Speed Centrifuge.....	75
INH18.5/INH17.5 Tabletop High-Speed Centrifuge	77
INTG 16.5 Tabletop High-Speed Centrifuge	79
INTG 16 Tabletop High-Speed Centrifuge	81
INTG 16A Tabletop High-Speed Centrifuge	83
INH14.5M Micro Centrifuge	85
INTD6 Tabletop Low-Speed and High-Capacity Centrifuge	87
INL580 Tabletop Low-Speed and High-Capacity Centrifuge	89
INTD5.5 Multi-tube Rack Automatic Balancing Centrifuge	91
INTD5Z Multi-tube Rack Automatic Balancing Centrifuge	93
INDL-5T/INTDL-5T/INTDL-4T Automatic Decapitation Refrigerated Centrifuge	95
IND5T/INTD5T/INTD4T Automatic Decapitation Refrigerated Centrifuge	97
INTD6B Tabletop Low-speed Automatic Balancing Centrifuge	99
INTD5B Tabletop Low-speed Automatic Balancing Centrifuge	101
INTD4B Tabletop Low-speed Automatic Balancing Centrifuge	103
INTD4 Tabletop Low-speed Automatic Balancing Centrifuge	105
INTD5P PRP Centrifuge for Cosmetology	107
INTD5G Low-Speed Centrifuge	108
INTD4X Blood Washing Centrifuge	109
INTG12X Capillary Blood Centrifuge	111
INTD5GL Low-Speed Filtration Centrifuge	113
INTG10K/INTD6K/INTD4K Mini-Centrifuge	114
INTG10K/INTD6K/INTD4K Mini-Centrifuge(Updated model)	115
INMiniL-12G High-Capacity Mini Centrifuge	117
INTG12K Mini-Centrifuge	119
INTD4A Tabletop Low-Speed Centrifuge	121
INL5M Microplate Centrifuge	123

INBH2500R/INBH2300R

Floor-standing High-Speed Refrigerated Centrifuge



Designed specifically for customers with high RPM requirements, it can be widely used in clinical medicine, bioengineering, genetic engineering, pharmaceuticals, colleges and universities, etc.

01/ Technical Performance

- The max speed is 25000rpm, and the largest capacity of fixed rotor is 4×1000ml.
- It has micro-computer control, electronic lock and AC variable-conversion motor which delivers high torque.
- Front LCD touch screen make operation conveniently in any installed position.
- Imported compressor unit with Non-CFC refrigerant R404a.
- The operating data and failure record can be stored to read and print via USB interface.
- Automatic rotor recognition make safety for multiple rotors choice.
- Up to 100 user programs storage and multistep-stages program supplied meet more demands.
- It has self-locking, over-speed detection, over-temperature detection, imbalance detection that is automatic alarm device.
- It has 10 levels acceleration and 11 levels deceleration to be setting according to the different requirement. Slow down freely is available.
- Imported PC transparent bottles is suitable for high temperature sterilization.
- Silastic sealed ring comfort to GMP, US FDA certificated.

02/ Technical Parameters

Model	INBH2500R	INBH2300R
Max speed	25000r/min	23000r/min
Max RCF	64983 ×g	60900 ×g
Max capacity	4 × 1000ml	
Speed accuracy	± 10r/min	
Time setting	1s~99h 59min59s	
Temperature setting	-20 °C ~+40 °C	
Temperature accuracy	± 1 °C	
Compressor unit	French Tecumseh Compressor Unit R404a	
Noise	<65db(A)	
Power supply	AC220V, 50Hz -60Hz	
Consumption	5kw	
Dimension(LxWxH)	900mm × 760mm × 1005mm	
Packing size(LxWxH)	1020mm × 880mm × 1105mm	
Net weight (No rotor)	350kg	

03 Technical Rotor parameters



No.1

- Capacity:10×5ml
- Max speed:25000r/min/23000r/min
- Max RCF:64983×g/55000×g
- Adaptor:0.5ml、1.5ml



No.1

- Capacity:24×1.5ml/2.2ml
- Max speed:25000r/min/23000r/min
- Max RCF:64983×g/55000×g
- Adaptor:0.2ml、0.5ml



No.2

- Capacity:16×10ml
- Max speed:23000r/min
- Max RCF:60900×g
- Adaptor:1.5ml、5ml



No.3

- Capacity:8×50ml
- Max speed:18000r/min
- Max RCF:40930×g
- Adaptor:10ml、20ml



No.4

- Capacity:6×250ml
- Max speed:14000r/min
- Max RCF:30200×g
- Adaptor:50ml、100ml



No.5

- Capacity:6×500ml
- Max speed:10000r/min
- Max RCF:17800×g
- Adaptor:50ml、100ml、250ml



No.6

- Capacity:4×1000ml
- Max speed:7000r/min
- Max RCF:9980×g
- Adaptor:100ml、250ml、300ml、500ml



No.7

- Description:Continuous Rotor
- Capacity:1000ml
- Max speed:16000r/min
- Max RCF:28100×g
- Standard Flow:200~600ml/min
- Material:Aluminum Alloy



No.8

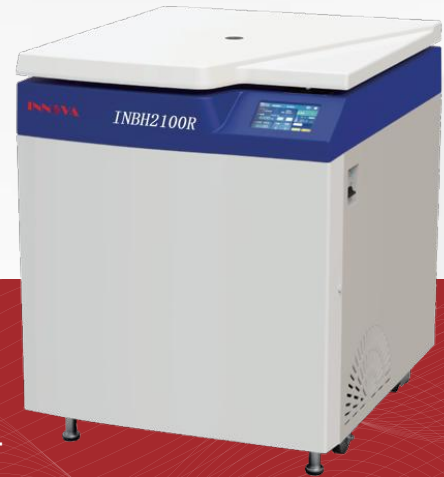
- Description:Continuous Rotor
- Capacity:3000ml
- Max speed:10000r/min
- Max RCF:14800×g
- Standard Flow:200~800ml/min
- Material:Aluminum Alloy

04 Other rotors supplies

Swing rotor	Capacity	Max.speed	Max.RCF
No.9	4×50ml	10000r/min	15316 ×g
No.9	4×85ml	10000r/min	15316 ×g
No.10	8×50ml	10000r/min	17329 ×g

INBH2200R/INBH2100R

Floor-standing High-Speed Refrigerated Centrifuge



A new generation of intelligent centrifuge with international advanced level, superb, intelligent control system, is the first choice for molecular biology, protein, DNA, RNA, cell separation, clinical medicine

01/ Technical Performance

- It has micro-computer control, electronic lock and AC variable-conversion motor which delivers high torque.
- Front LCD touch screen make operation conveniently in any installed position.
- Imported compressor unit with Non-CFC refrigerant R404a.
- The operating data and failure record can be stored to read and print via USB interface.
- Automatic rotor recognition make safety for multiple rotors choice.
- Up to 100 user programs storage and multistep-stages program supplied meet more demands.
- It has self-locking, over-speed detection, over-temperature detection, imbalance detection that is automatic alarm device.
- It has 10 levels acceleration and 11 levels deceleration to be setting according to the different requirement. Slow down freely is available.
- Imported PC transparent bottles is suitable for high temperature sterilization.
- Silastic sealed ring comfort to GMP, US FDA certificated.

02/ Technical Parameters

Model	INBH2200R	INBH2100R
Max speed	22000r/min	21000r/min
Max RCF	52000 ×g	50400 ×g
Max capacity	6×600ml	6×500ml
Speed accuracy	±10r/min	
Time setting	1s~99h 59min59s	
Temperature setting	-20 °C ~+40 °C	
Temperature accuracy	±1 °C	
Compressor unit	French Tecumseh Compressor Unit R404a	
Noise	<65db(A)	
Power supply	AC220V, 50Hz -60Hz	
Consumption	5kw	
Dimension(LxWxH)	900mm × 760mm × 1005mm	
Packing size(LxWxH)	1020mm × 880mm × 1105mm	
Net weight (No rotor)	350kg	

03 Technical Rotor parameters



No.1

- Capacity:36×1.5ml/2.2ml
- Max speed:22000r/21000r/min
- Max RCF:52000×g/50400×g
- Adaptor:0.2ml、 0.5ml



No.2

- Capacity:12×20ml
- Max speed:16500r/min
- Max RCF:31100×g
- Adaptor:5ml、 10ml



No.3

- Capacity:18×10ml
- Max speed:21000r/min
- Max RCF:50400×g
- Adaptor:1.5ml、 5ml



No.4

- Capacity:8×50ml
- Max speed:18000r/min
- Max RCF:35047×g
- Adaptor:10ml、 20ml



No.10

- Capacity:6×500ml
- Max speed:9000r/min
- Max RCF:14400×g
- Adaptor:50ml、 100ml、 250ml



No.13

- Capacity:6×250ml
- Max speed:12000r/min
- Max RCF:22470×g
- Adaptor:50ml、 100ml



No.23

- Description:Continuous Rotor
- Capacity:1000ml
- Max speed:16000r/min
- Max RCF:28100×g
- Standard Flow:200~600ml/min
- Material:Aluminum Alloy



No.24

- Description:Continuous Rotor
- Capacity:3000ml
- Max speed:10000r/min
- Max RCF:14800×g
- Standard Flow:200~800ml/min
- Material:Aluminum Alloy



No.25

- Capacity:12×15ml
- Max speed:16000r/min
- Max RCF:30194×g

04 Other rotors supplies

Angle rotor	Capacity	Max.speed	Max.RCF
No.1	16×10ml	22000r/min/21000r/min	52000 ×g/50400 ×g
No.1	16×5ml	22000r/min/21000r/min	52000 ×g/50400 ×g
No.5	6×70ml	15000r/min	25700 ×g
No.9	6×300ml	11000r/min	19650 ×g
No.11	6×50ml	20000r/min	43000 ×g
No.12	8×100ml	14000r/min	26952 ×g
No.14	32×15ml	14000r/min	34512 ×g
No.17	6×600ml	7000r/min	9100 ×g
Swing rotor			
No.6	4×750ml	5000r/min	5470 ×g
No.7	8×50ml	5000r/min	4390 ×g
	32×15ml		
No.19	96×10ml	5000r/min	4390 ×g
	72×15ml		
	20×50ml		
No.20	Miceoplate 2×2×96	4000r/min	2236 ×g
No.21	4×50ml 、 4×85ml	8000r/min	9800 ×g

INH2500R

Floor-standing High-Speed Refrigerated Centrifuge



Specially designed for customers with high demand for rotational speed, it can be widely used in clinical medicine, bioengineering, genetic engineering, pharmaceuticals, universities and other fields.

01/ Technical Performance

- The max speed is 25000rpm, and the largest capacity of fixed rotor is 4×1000ml.
- It has micro-computer control, electronic lock and AC variable-conversion motor which delivers high torque.
- LCD touch screen make visualized operation conveniently.
- Imported compressor unit with Non-CFC refrigerant R404a.
- Automatic rotor recognition make safety for multiple rotors choice.
- Up to 100 user programs storage meet more demands.
- It has self-locking, over-speed detection, over-temperature detection, imbalance detection that is automatic alarm device.
- It has 9 levels acceleration and 10 levels deceleration to be setting according to the different requirement. Slow down freely is available.
- Silastic sealed ring comfort to GMP, US FDA certificated.
- * PLC control system can be optional, to realize the PDF export printing function, specific model performance details please see INBH2500R.

02/ Technical Parameters

Model	INH2500R
Max speed	25000r/min
Max RCF	64983 ×g
Max capacity	4×1000ml
Speed accuracy	±10r/min
Time setting	1s~99h 59min59s
Temperature setting	-20℃ ~+40℃
Temperature accuracy	±1℃
Compressor unit	FrenchTecumseh Compressor Unit R404a
Noise	<65db(A)
Power supply	AC220V,50Hz -60Hz
Consumption	5kw
Dimension(LxWxH)	710mm ×840mm ×1140mm
Packing size(LxWxH)	890mm ×960mm ×1400mm
Net weight (No rotor)	280kg

03 Technical Rotor parameters



No.1

- Capacity:24×1.5ml/2.2ml
- Max speed:25000r/min/21000r/min
- Max RCF:64983×g/50400×g
- Adaptor:0.2ml、 0.5ml



No.2

- Capacity:16×10ml
- Max speed:23000r/min/21000r/min
- Max RCF:60900×g/50400×g
- Adaptor:1.5ml、 5ml



No.3

- Capacity:8×50ml
- Max speed:18000r/min
- Max RCF:40930×g
- Adaptor:10ml、 20ml



No.5

- Capacity:6×500ml/400ml
- Max speed:10000r/min
- Max RCF:17800×g
- Adaptor:50ml、 100ml、 250ml



No.6

- Capacity:4×1000ml
- Max speed:8000r/min
- Max RCF:12879×g
- Adaptor:100ml、 250ml、 300ml、 500ml



No.7

- Description:Continuous Rotor
- Capacity:1000ml
- Max speed:16000r/min
- Max RCF:28100×g
- Standard Flow:200~600ml/min
- Material:Aluminum Alloy



No.8

- Description:Continuous Rotor
- Capacity:3000ml
- Max speed:10000r/min
- Max RCF:14800×g
- Standard
- Flow:200~800ml/min
- Material:Aluminum Alloy



No.11

- Capacity:6×50ml
- Max speed:21000r/min
- Max RCF:45816×g

04 Other rotors supplies

Angle rotor	Capacity	Max.speed	Max.RCF
No.1	10×5ml	25000r/min/21000r/min	64983 ×g/50400 ×g
Swing rotor			
No.9	4×50ml	10000r/min	15316 ×g
No.9	4×85ml	10000r/min	15316 ×g
No.10	8×50ml	10000r/min	17329 ×g

INH2200R/INH2100R

Floor-standing High-Speed Refrigerated Centrifuge



Specially designed for customers with high demand for rotational speed, it can be widely used in clinical medicine, bioengineering, genetic engineering, pharmaceuticals, universities and other fields.

01/ Technical Performance

- The max speed is 25000rpm, and the largest capacity of fixed rotor is 4×1000ml.
- It has micro-computer control, electronic lock and AC variable-conversion motor which delivers high torque.
- LCD touch screen make visualized operation conveniently.
- Imported compressor unit with Non-CFC refrigerant R404a.
- Automatic rotor recognition make safety for multiple rotors choice.
- Up to 100 user programs storage meet more demands.
- It has self-locking, over-speed detection, over-temperature detection, imbalance detection that is automatic alarm device.
- It has 9 levels acceleration and 10 levels deceleration to be setting according to the different requirement. Slow down freely is available.
- Silastic sealed ring comfort to GMP, US FDA certificated.

02/ Technical Parameters

Model	INH2200R	INH2100R
Max speed	22000r/min	21000r/min
Max RCF	52000 ×g	50400 ×g
Max capacity	6×600ml	6×500ml
Speed accuracy	±10r/min	
Time setting	1s~99h 59min59s	
Temperature setting	-20 °C ~+40 °C	
Temperature accuracy	±1 °C	
Compressor unit	French Tecumseh Compressor Unit R404a	
Noise	<65db(A)	
Power supply	AC220V,50Hz -60Hz	
Consumption	5kw	
Dimension(LxWxH)	710mm ×840mm ×1140mm	
Packing size(LxWxH)	890mm ×960mm ×1400mm	
Net weight (No rotor)	280kg	

03 Technical Rotor parameters



No.1

- Capacity:36×1.5ml/2.2ml
- Max speed:22000r/min/21000r/min
- Max RCF:52000×g/50400×g
- Adaptor:0.2ml、 0.5ml



No.2

- Capacity:16×10ml
- Max speed:22000r/min/21000r/min
- Max RCF:52000×g/50400×g
- Adaptor:1.5ml、 5ml



No.4

- Capacity:8×50ml
- Max speed:18000r/min
- Max RCF:35047×g
- Adaptor:10ml、 20ml



No.8

- Capacity:8×100ml/85ml
- Max speed:14000r/min
- Max RCF:26952×g
- Adaptor:10ml、 20ml



No.10

- Capacity:6×300ml
- Max speed:11000r/min
- Max RCF:179650×g
- Adaptor:50ml、 100ml



No.11

- Capacity:6×500ml/400ml
- Max speed:10000r/min
- Max RCF:17800×g
- Adaptor:50ml、 100ml、 250ml



No.12

- Description:Continuous Rotor
- Capacity:1000ml
- Max speed:16000r/min
- Max RCF:28100×g
- Standard Flow:200~600ml/min
- Material:Aluminum Alloy



No.13

- Description:Continuous Rotor
- Capacity:3000ml
- Max speed:10000r/min
- Max RCF:14800×g
- Standard Flow:200~800ml/min
- Material:Aluminum Alloy



No.16

- Capacity:12×15ml
- Max speed:16000r/min
- Max RCF:30194×g

04 Other rotors supplies

Angle rotor	Capacity	Max.speed	Max.RCF
No.1	16 × 5ml	22000r/min/21000r/min	52000 × g/50400 × g
No.2	18 × 10ml	21000r/min	50400 × g
No.3	6 × 50ml	20000r/min	43000 × g
No.5	12 × 20ml	16500r/min	31100 × g
No.6	32 × 16ml	16000r/min	30940 × g
No.7	6 × 70ml	15000r/min	25700 × g
No.9	6 × 250ml	12000r/min	22470 × g
No.14	6 × 600ml	7000r/min	9100 × g
Swing rotor			
No.15	4 × 50ml	8000r/min	9800 × g
No.15	4 × 85ml	8000r/min	9800 × g

INGL-25M/INGL-23M

Floor-standing High-Speed Refrigerated Centrifuge



Specially designed for customers with high demand for rotational speed, it can be widely used in clinical medicine, bioengineering, genetic engineering, pharmaceuticals, universities and other fields.

01/ Technical Performance

- The max speed is 25000rpm, and the largest capacity of fixed rotor is 4×1000ml.
- It has micro-computer control, electronic lock and AC variable-conversion motor which delivers high torque.
- Digital LCD screen make visualized operation conveniently.
- Imported compressor unit with Non-CFC refrigerant R404a.
- It has self-locking, over-speed detection, over-temperature detection, imbalance detection that is automatic alarm device.
- Essential configuration included rotor exchange, speed/RCF, time, temperature, 9 levels acceleration and deceleration is the most economical choice.
- Silastic sealed ring comfort to GMP, US FDA certificated.

02/ Technical Parameters

Model	INGL -25M	INGL -23M
Max speed	25000r/min	21000r/min
Max RCF	64983 ×g	50400 ×g
Max capacity	4×1000ml	6×500ml
Speed accuracy	± 10r/min	
Time setting	1s~99h 59min59s	
Temperature setting	-20 °C ~+40 °C	
Temperature accuracy	± 1 °C	
Compressor unit	French Tecumseh Compressor Unit R404a	
Noise	<65db(A)	
Power supply	AC220V, 50Hz -60Hz	
Consumption	5kw	
Dimension(LxWxH)	710mm × 840mm × 1200mm	
Packing size(LxWxH)	889mm × 960mm × 1450mm	
Net weight (No rotor)	290kg	

03 Technical Rotor parameters



No.1

- Capacity:24×1.5ml/2.2ml
- Max speed:25000r/min/21000r/min
- Max RCF:64983×g/50400×g
- Adaptor:0.2ml、 0.5ml



No.2

- Capacity:16×10ml
- Max speed:22000r/min/21000r/min
- Max RCF:52000×g/50400×g
- Adaptor:1.5ml、 5ml



No.3

- Capacity:8×50ml
- Max speed:18000r/min
- Max RCF:40930×g
- Adaptor:10ml、 20ml



No.4

- Capacity:6×250ml
- Max speed:14000r/min
- Max RCF:30200×g
- Adaptor:50ml、 100ml



No.5

- Capacity:6×500ml
- Max speed:10000r/min
- Max RCF:17800×g
- Adaptor:50ml、 100ml、 250ml



No.6

- Capacity:4×1000ml
- Max speed:8000r/min
- Max RCF:12879×g
- Adaptor:100ml、 250ml、 300ml、 500ml



No.11

- Description:Continuous Rotor
- Capacity:1000ml
- Max speed:14000r/min
- Max RCF:21500×g
- Standard Flow:200~600ml/min
- Material:Aluminum Alloy



No.12

- Description:Continuous Rotor
- Capacity:3000ml
- Max speed:10000r/min
- Max RCF:14800×g
- Standard Flow:200~800ml/min
- Material:Aluminum Alloy

04 Other rotors supplies

Angle rotor	Capacity	Max.speed	Max.RCF
No.1	10×5ml	25000r/min/21000r/min	64983 ×g/50400 ×g
No.14	12×50ml(Conical)	14000r/min	31554 ×g
No.15	6×50ml(Carbon fiber)	21000r/min	45816 ×g
Continuous rotor			
No.9	1000ml(Stainless steel)	16000r/min	45816 ×g
No.7	3000ml(Stainless steel)	10000r/min	14800 ×g
Swing rotor			
No.7	Miceoplate 2×2×96	4000r/min	2236 ×g
No.8	4×750ml	4000r/min	3780 ×g
INGL -25M			
No.13	4×50ml	10000r/min	15316 ×g
No.13	4×85ml	10000r/min	15316 ×g
INGL -23M			
No.13	4×50ml	9000r/min	12406 ×g
No.13	4×85ml	9000r/min	12406 ×g

INGL-22M/INGL-21M

Floor-standing High-Speed Refrigerated Centrifuge



Specially designed for customers with high demand for rotational speed, it can be widely used in clinical medicine, bioengineering, genetic engineering, pharmaceuticals, universities and other fields.

01/ Technical Performacne

- The max speed is 22000rpm, 21000rpm, and max RCF is 52000×g,50400×g.
- It has micro-computer control, electronic lock and AC variable-conversion motor which delivers high torque.
- Digital LCD screen make visualized operation conveniently.
- Imported compressor unit with Non-CFC refrigerant R404a.
- It has self-locking,over-speed detection, over-temperature detection,imbalance detection that is automatic alarm device.
- Essential configuration included rotor exchange, speed/RCF, time,temperature,9 levels acceleration and deceleration is the most economical choice.
- Silastic sealed ring comfort to GMP, US FDA certificated.

02/ Technical Parameters

Model	INGL - 22M	INGL - 21M
Max speed	22000r/min	21000r/min
Max RCF	52000 ×g	50400 ×g
Max capacity	6×600ml	
Speed accuracy	±10r/min	
Time setting	1s~99h 59min59s	
Temperature setting	-20℃ ~+40℃	
Temperature accuracy	±1℃	
Compressor unit	FrenchTecumseh Compressor Unit R404a	
Noise	<65db(A)	
Power supply	AC220V,50Hz -60Hz	
Consumption	5kw	
Dimension(LxWxH)	710mm ×840mm ×1200mm	
Packing size(LxWxH)	889mm ×960mm ×1450mm	
Net weight (No rotor)	290kg	

03 Technical Rotor parameters



No.1

- Capacity:36×1.5ml/2.2ml
- Max speed:22000r/min、 21000r/min
- Max RCF:52000×g、 50400×g
- Adaptor:0.2ml、 0.5ml



No.1

- Capacity:16×10ml
- Max speed:22000r/min/21000r/min
- Max RCF:52000×g/50400×g
- Adaptor:1.5ml、 5ml



No.4

- Capacity:8×50ml
- Max speed:18000r/min
- Max RCF:35047×g
- Adaptor:10ml、 20ml



No.10

- Capacity:6×500ml
- Max speed:9000r/min
- Max RCF:14400×g
- Adaptor:50ml、 100ml、 250ml



No.13

- Capacity:6×250ml
- Max speed:12000r/min
- Max RCF:22470×g
- Adaptor:50ml、 100ml



No.23

- Description:Continuous Rotor
- Capacity:1000ml
- Max speed:14000r/min
- Max RCF:21500×g
- Standard Flow:200~600ml/min
- Material:Aluminum Alloy



No.24

- Description:Continuous Rotor
- Capacity:3000ml
- Max speed:10000r/min
- Max RCF:14800×g
- Standard Flow:200~800ml/min
- Material:Aluminum Alloy



No.25

- Capacity:12×15ml
- Max speed:16000r/min
- Max RCF:30194×g

04 Other rotors supplies

Angle rotor	Capacity	Max.speed	Max.RCF
No.1	16×5ml	22000r/min/21000r/min	52000 ×g/50400 ×g
No.2	12×20ml	16500r/min	31100 ×g
No.3	18×10ml	21000r/min	50400 ×g
No.5	6×70ml	15000r/min	25700 ×g
No.9	6×300ml	11000r/min	19650 ×g
No.11	6×50ml	20000r/min	43000 ×g
No.12	8×100ml	14000r/min	26952 ×g
No.14	32×15ml	14000r/min	34512 ×g
No.17	6×600ml	7000r/min	9100 ×g
Continuous rotor			
No.8	1000ml(Stainless steel)	16000r/min	45816 ×g
No.18	3000ml(Stainless steel)	10000r/min	14800 ×g
Swing rotor			
No.6	4×750ml	4000r/min	3780 ×g
No.7	4×50ml	5000r/min	4390 ×g
	8×50ml		
	32×15ml		
No.19	96×10ml	5000r/min	4390 ×g
	72×15ml		
	20×50ml		
No.20	Miceoplate 2×2×96	4000r/min	2236 ×g
No.21	4×50ml	8000r/min	9800 ×g
	4×85ml		

INGL-20.5M

Floor-standing High-Speed Refrigerated Centrifuge



Specially designed for customers with high demand for rotational speed, it can be widely used in clinical medicine, bioengineering, genetic engineering, pharmaceuticals, universities and other fields.

01/ Technical Performance

- The max speed is 20500rpm, and the largest capacity of swing rotor is 4×750ml.
- It has micro-computer control, electronic lock and AC variable-conversion motor which delivers high torque.
- Digital LCD screen make visualized operation conveniently
- Imported compressor unit with Non-CFC refrigerant R404a.
- It has self-locking, over-speed detection, over-temperature detection, imbalance detection that is automatic alarm device.
- Essential configuration included rotor exchange, speed/RCF, time, temperature, 9 levels acceleration and deceleration is the most economical choice.
- Silastic sealed ring comfort to GMP, US FDA certificated.

02/ Technical Parameters

Model	INGL -20.5M
Max speed	20500r/min
Max RCF	29200 ×g
Max capacity	4×750ml
Speed accuracy	±10r/min
Time setting	1s~99h 59min59s
Temperature setting	-20℃ ~+40℃
Temperature accuracy	±1℃
Compressor unit	French Tecumseh Compressor Unit R404a
Noise	<65db(A)
Power supply	AC220V, 50Hz -60Hz
Consumption	5kw
Dimension(LxWxH)	650mm × 710mm × 1100mm
Packing size(LxWxH)	740mm × 830mm × 1300mm
Net weight (No rotor)	170kg

03 Technical Rotor parameters



No.1

- Capacity:12×1.5ml/2.2ml
- Max speed:20500r/min
- Max RCF:29200×g
- Adaptor:0.2ml、 0.5ml



No.1

- Capacity:6×30ml
- Max speed:15000r/min
- Max RCF:23120×g



No.2

- Capacity:12×10ml
- Max speed:15000r/min
- Max RCF:23120×g
- Adaptor:1.5ml、 5ml



No.3

- Capacity:6×50ml
- Max speed:13000r/min
- Max RCF:17940×g
- Adaptor:10ml、 20ml



No.5

- Capacity:Miceoplate 2×2×96
- Max speed:4000r/min
- Max RCF:2200×g
- thickness≤70mm



No.7

- Capacity:24×1.5ml/2.2ml
- Max speed:16500r/min
- Max RCF:24890×g
- Adaptor:0.2ml、 0.5ml



No.7

- Capacity:6×85ml
- Max speed:12000r/min
- Max RCF:15805×g



No.9

- Capacity:4×100ml
- Max speed:11000r/min
- Max RCF:11720×g
- Adaptor:10ml、 20ml



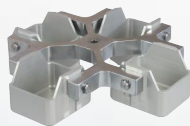
No.10

- Capacity:Miceoplate 2×2×96
- Max speed:3300r/min
- Max RCF:2200×g
- thickness≤70mm



No.4

- Capacity:4×750ml
- Max speed: 4000r/min
- Max RCF:3500×g



No.6

- Capacity:Square Bucket
- Max speed: 4000r/min
- Max RCF:3040×g



No.6

- Capacity:4×500ml
- Max speed: 4000r/min
- Max RCF:3040×g

INBH1200R

Floor-standing High-Speed Refrigerated Centrifuge



Specially designed for customers with high demand for rotational speed, it can be widely used in clinical medicine, bioengineering, genetic engineering, pharmaceuticals, universities and other fields.

01/ Technical Performance

- High-definition, large screen true color TFT touch screen control, easy to operate, intuitive display, setup parameters and real-time operating parameters can be displayed on the same screen.
- Large capacity of operating data and fault records and other information, easy to track operating history data information.
- Powerful control system, can realize ten-step ladder centrifugal, to meet the diversified experimental needs (100 programs, each program is divided into 10 segments), program mode, curve mode and other functions. Preset program call function, the user can customize the editing of 100 groups of programs, hierarchical password control, to ensure the use of the instrument is safe and reliable, to facilitate the refinement of management.
- 10 programs of the speed curve / 11 programs of the speed curve, while having the custom function of the speed time to further protect the centrifugal effect, to prevent the sample from the second suspension and sinking.
- The sample number can be input to check the centrifugation record of each sample.
- Adopting imported high-performance compressor set, non-fluorine refrigerant R404a, in line with environmental requirements.
- With rotor identification function, equipped with electronic door lock, with unbalance, door cover self-locking, overspeed, over-temperature and other procedures of protection, to ensure the safe operation of the instrument.
- Optional imported PC centrifugal bottle, transparent and intuitive, prolonging the service life, and can be autoclaved for it
- Adopt food-grade silicone rubber integral sealing ring, in line with GMP certification. The centrifuge obtains FDA certification.
- Optional automatic opening and closing of the door cover function, just touch the door open button on the control interface to easily realize the opening and closing of the door cover, no need to manually open and close the door. It has the intelligent anti-pinch device of the door cover.

02 Technical Parameters

Model	INBH1200R
Max speed	12000r/min
Max RCF	19830 ×g
Max capacity	4×2000ml
Speed accuracy	± 10r/min
Time setting	1s~99min59s/1min~99h 59min
Temperature setting	-20℃ ~+40℃
Temperature accuracy	± 1℃
Compressor unit	FrenchTecumseh Compressor Unit R404a
Noise	<65db(A)
Power supply	AC220V,50Hz -60Hz
Consumption	5.5kw
Dimension(LxWxH)	900mm × 760mm × 1005mm
Packing size(LxWxH)	1020mm × 880mm × 1105mm
Net weight (No rotor)	350kg

03 Technical Rotor parameters



No.1

- Capacity:8×100ml/85ml
- Max speed:12000r/min
- Max RCF:19830×g
- Adaptor:10ml、20ml



No.2

- Capacity:6×1000ml
- Max speed:8000r/min
- Max RCF:15169×g
- Adaptor:100ml、250ml、300ml、500ml



No.3

- Capacity:4×2000ml
- Max speed:6000r/min
- Max RCF:8410×g
- Adaptor:250ml、300ml、500ml、1000ml



No.4

- Capacity:6×500ml/400ml
- Max speed:8000r/min
- Max RCF:11620×g
- Adaptor:50ml、100ml、250ml



No.5

- Capacity:6×1000ml (Carbon fiber)
- Max speed:8500r/min
- Max RCF:17124×g
- Adaptor:100ml、250ml、300ml、500ml

INH1200R

Floor-standing High-Speed Refrigerated Centrifuge



Specially designed for customers with high demand for rotational speed, it can be widely used in clinical medicine, bioengineering, genetic engineering, pharmaceuticals, universities and other fields.

01/ Technical Performance

- The highest speed can be up to 12000rpm, the maximum capacity can be up to 2000mlx4.
- Microcomputer control, large distance AC frequency motorized, stable operation, low noise, high speed accuracy.
- Large screen real image TFT touch screen control, easy to operate, display face, setup parameters and real-time operating parameters can be displayed on the same screen.
- Large capacity data storage and fault record violence and other information, easy to trace the operation history data information, can export the relevant data and print.
- Powerful control system, can realize the segmented ladder centrifugal, preset program call, hierarchical password control, to ensure the use of safe and reliable instruments, to facilitate the refinement of management.
- With rotor identification, overspeed, super, unbalanced, door cover and other protection functions to ensure the safety and reliability of the instrument.
- Imported high-performance compressor, non-fluorine refrigerant R404a, in line with environmental requirements.
- Adopting edible silicone integral sealing ring, in line with GMP certification, centrifuge to obtain the U.S. FDA certification.
- With 10 programs of speed up curve / 11 programs of speed down curve, at the same time with the customization function of the time of speed up and down.
- Further protect the centrifugal effect, prevent the sample from the second suspension and sinking.
- can be optional PLC control system, to achieve PDF export printing function, specific technical performance details INBH2500R.

02 Technical Parameters

Model	INH1200R
Max speed	12000r/min
Max RCF	19830 ×g
Max capacity	4×2000ml
Speed accuracy	±10r/min
Time setting	1s~99min 59s/1min~99h 59min
Temperature setting	-20 °C ~+40 °C
Temperature accuracy	±1 °C
Compressor unit	French Tecumseh Compressor Unit R404a
Noise	<65db(A)
Power supply	AC220V,50Hz -60Hz
Consumption	5.5kw
Dimension(LxWxH)	710mm ×840mm ×1140mm
Packing size(LxWxH)	890mm ×960mm ×1400mm
Net weight (No rotor)	290kg

03 Technical Rotor parameters



No.1

- Capacity:8×100ml/85ml
- Max speed:12000r/min
- Max RCF:19830×g
- Adaptor:10ml、20ml



No.2

- Capacity:6×1000ml
- Max speed:8000r/min
- Max RCF:15169×g
- Adaptor:100ml、250ml、300ml、500ml



No.3

- Capacity:4×2000ml
- Max speed:6000r/min
- Max RCF:8410×g
- Adaptor:250ml、300ml、500ml、1000ml



No.4

- Capacity:6×500ml/400ml
- Max speed:8000r/min
- Max RCF:11620×g
- Adaptor:50ml、100ml、250ml

INGL-12M

Floor-standing High-Speed Refrigerated Centrifuge



Specially designed for customers with high demand for rotational speed, it can be widely used in clinical medicine, bioengineering, genetic engineering, pharmaceuticals, universities and other fields.

01/ Technical Performance

- The max speed is 20500rpm, and the largest capacity of swing rotor is 4×750ml.
- It has micro-computer control, electronic lock and AC variable-conversion motor which delivers high torque.
- Digital LCD screen make visualized operation conveniently
- Imported compressor unit with Non-CFC refrigerant R404a.
- It has self-locking, over-speed detection, over-temperature detection, imbalance detection that is automatic alarm device.
- Essential configuration included rotor exchange, speed/RCF, time, temperature, 9 levels acceleration and deceleration is the most economical choice.
- Silastic sealed ring comfort to GMP, US FDA certificated.

02/ Technical Parameters

Model	INGL -12M
Max speed	12000r/min
Max RCF	19830 ×g
Max capacity	4×2000ml
Speed accuracy	±10r/min
Time setting	1s~99h 59min
Temperature setting	-20℃ ~+40℃
Temperature accuracy	±1℃
Compressor unit	French Tecumseh Compressor Unit R404a
Noise	<65db(A)
Power supply	AC220V, 50Hz -60Hz
Consumption	5.5kw
Dimension(LxWxH)	710mm ×840mm ×1200mm
Packing size(LxWxH)	890mm ×960mm ×1450mm
Net weight (No rotor)	300kg

03 Technical Rotor parameters



No.1

- Capacity: 8×100ml
- Max speed: 12000r/min
- Max RCF: 19830×g
- Adaptor: 10ml、20ml



No.2

- Capacity: 6×1000ml
- Max speed: 7000r/min
- Max RCF: 11600×g
- Adaptor: 100ml、250ml、300ml、500ml



No.3

- Capacity: 4×2000ml
- Max speed: 6000r/min
- Max RCF: 8410×g
- Adaptor: 250ml、300ml、500ml、1000ml



No.4

- Capacity: 6×500ml
- Max speed: 8000r/min
- Max RCF: 11620×g
- Adaptor: 50ml、100ml、250ml

INCL800R

Floor-standing High-Speed Refrigerated Centrifuge



Specifically designed for customers with large capacity needs, this model has a large sample handling capacity and is the preferred product for central blood stations, pharmaceuticals, bioengineering and other fields. Applicable to many specifications of blood bags.

01/ Technical Performance

- High-definition, large screen true color TFT touch screen control, easy to operate, intuitive display, setup parameters and real-time operating parameters can be displayed on the same screen.
- Large capacity of operating data and fault records and other information, easy to track the operating history data information.
- Powerful control system, can achieve ten steps centrifugal, to meet the needs of diversified experiments (100 programs each program is divided into 10 steps) program mode, curve mode and other functions. Preset program call function.
- User-defined editing of 100 groups of programs, hierarchical password control, to ensure the use of instruments safe and reliable, to facilitate the refinement of management.
- Optional PLC control system, real-time dynamic display of the control flow chart, with PID adjustment function, to achieve electronic records and electronic signatures, while USB export related data and PDF printing, in line with the new version of China's GMP requirements.
- 10 kinds of speed up curve, 11 kinds of deceleration curve, at the same time with the customization function of speed up and down time. Further safeguard the centrifugal effect and prevent the sample from being suspended twice.
- Sample number can be entered to check the centrifugation record of each sample.
- Adopting imported high-performance compressor, non-fluorine refrigerant R404a, in line with environmental requirements.
- Advanced adsorption type door lock, with rotor identification, imbalance, door cover self-locking, over-speed, over-temperature and other procedures to ensure the safe operation of the instrument.
- Optional imported PC centrifugal bottle transparent intuitive, prolong the service life, and can be auto-clavable
- Adopt food-grade silicone rubber integral sealing ring, in line with GMP certification. Centrifuge to obtain U.S. FDA certification
- Optional blood bag special program.
- Optional automatic opening and closing of the door cover function, just touch the door open button on the control interface to easily realize the opening and closing of the door cover, no need to manually open and close the door. Intelligent anti-pinch device for the door cover.

02 Technical Parameters

Model	INCL800R
Max speed	9000r/min
Max RCF	18807 ×g
Max capacity	8×2200ml
Speed accuracy	±10r/min
Time setting	1s~99min59s/1min~99h 59min
Temperature setting	-20 °C ~+40 °C
Temperature accuracy	±1 °C
Compressor unit	FrenchTecumseh Compressor Unit R404a
Noise	<70db(A)
Power supply	AC380V 50Hz 40A
Consumption	7.5kw
Dimension(LxWxH)	920mm × 1100mm × 1070mm
Packing size(LxWxH)	1080mm × 1200mm × 1180mm
Net weight (No rotor)	550kg

03 Technical Rotor parameters



No.1

- Capacity:6×500ml/400ml
- Max speed:8000r/min
- Max RCF:11260×g
- Adaptor:50ml、 100ml、 250ml



No.2

- Capacity:6×2000ml
- Max speed:4000r/min
- Max RCF:6260×g



No.2

- Capacity:6×2×1000ml
- Max speed:4000r/min
- Max RCF:6260×g



No.3

- Capacity:6×2400ml
- Max speed:4500r/min
- Max RCF:6950×g



No.4

- Capacity:6×1000ml (Carbon fiber)
- Max speed:9000r/min
- Max RCF:18807×g
- Adaptor:100ml、 250ml、 300ml、 500ml



No.5

- Capacity:Specially for blood bags
- Max speed:4000r/min
- Max RCF:5734×g



No.6

- Capacity:8×2200ml
- Max speed:4000r/min
- Max RCF:5867×g

INBL800R

Floor-standing High-Speed Refrigerated Centrifuge



Specifically designed for customers with large capacity needs, this model has a large sample handling capacity and is the preferred product for central blood stations, pharmaceuticals, bioengineering and other fields. Applicable to many specifications of blood bags.

01/ Technical Performance

- High-definition, large screen true color TFT touch screen control, easy to operate, intuitive display, setup parameters and real-time operating parameters can be displayed on the same screen.
- Extra-large capacity of running data and fault records and other information, convenient to track the running history data information.
- Powerful control system, which can realize ten-step ladder centrifugation to meet diversified experimental needs (100 programs, each program is divided into 10 segments), program mode, curve mode and other functions. Preset program call function, the user can customize the editing of 100 groups of programs, hierarchical password control, to ensure the use of the instrument is safe and reliable, to facilitate the refinement of management.
- Optional PLC control system, real-time dynamic display of the control flow chart, with PID adjustment function, to achieve electronic records and electronic signatures, while USB export related data and PDF printing, in line with the new version of China's GMP requirements.
- 10 kinds of speed-up curves, 11 kinds of deceleration curves, at the same time with the customization function of speed-up and down time. It can further guarantee the centrifugal effect and prevent the sample from being suspended twice.
- Sample number can be entered to check the centrifugation record of each sample.
- Adopting imported high-performance compressor unit, non-fluorine refrigerant R404a, in line with environmental requirements.
- Equipped with special rotor system for various blood stations, it can centrifuge triple and quadruple bags commonly used in blood stations; the maximum capacity is up to 2400mlx6, and the sample processing capacity is up to 14400ml at one time.
- With rotor identification function, equipped with electronic door lock, with unbalance, door cover self-locking, overspeed, over-temperature and other programs of protection, to ensure the safe operation of the instrument.
- Imported PC centrifugal bottle is optional, transparent and intuitive, prolonging the service life and autoclaving it.
- Adopting food-grade silicone rubber monolithic sealing ring, in line with GMP certification. The centrifuge obtains the U.S. FDA certification.
- Optional automatic opening and closing of the door cover function, just touch the door open button on the control interface can easily realize the door cover opening and closing the door, no need to manually open and close the door. Intelligent anti-pinch device for the door cover.
- Optional blood bag special program.

02 Technical Parameters

Model	INBL800R
Max speed	9000r/min
Max RCF	18807 ×g
Max capacity	6×2400ml
Speed accuracy	±10r/min
Time setting	1s~99min59s/1min~99h 59min
Temperature setting	-20 °C ~+40 °C
Temperature accuracy	±1 °C
Compressor unit	FrenchTecumseh Compressor Unit R404a
Noise	<70db(A)
Power supply	AC380V 50Hz 40A
Consumption	7.5kw
Dimension(LxWxH)	910mm ×1015mm ×1070mm
Packing size(LxWxH)	1030mm ×1135mm ×1180mm
Net weight (No rotor)	500kg

03 Technical Rotor parameters



No.1

- Capacity:6×500ml/400ml
- Max speed:8000r/min
- Max RCF:11260×g
- Adaptor:50ml、100ml、250ml



No.2

- Capacity:6×2×1000ml
- Max speed:4000r/min
- Max RCF:6260×g



No.2

- Capacity:6×2000ml
- Max speed:4000r/min
- Max RCF:6260×g



No.3

- Capacity:6×2400ml
- Max speed:4500r/min
- Max RCF:6950×g



No.4

- Capacity:6×1000ml
- Max speed:8000r/min
- Max RCF:15169×g
- Adaptor:100ml、250ml、300ml、500ml



No.5

- Capacity:6×1000ml (Carbon fiber)
- Max speed:9000r/min
- Max RCF:18807×g
- Adaptor:100ml、250ml、300ml、500ml

INL800R

Floor-standing High-Speed Refrigerated Centrifuge



Specifically designed for customers with large capacity needs, this model has a large sample handling capacity and is the preferred product for central blood stations, pharmaceuticals, bioengineering and other fields. Applicable to many specifications of blood bags.

01/ Technical Performance

- Large capacity data storage and fault logging information, easy to track the operation history data information, can export the relevant data and print. The maximum capacity can be up to 2400mlx6, a sample processing capacity of up to 14400ml.
- Large screen colorful TFT touch screen control, easy to operate, intuitive display, setup parameters and real-time operating parameters can be displayed on the same screen.
- Imported high-performance compressor, non-fluorine refrigerant R404a, in line with environmental requirements.
- Equipped with special rotor system for various blood stations, it can centrifuge the triple bags and quadruple bags commonly used in blood stations.
- Equipped with electronic door lock, with rotor identification, imbalance, door cover self-locking, overspeed, over-temperature and other procedures to ensure the safe operation of the instrument.
- Optional imported PC centrifuge bottle transparent visualization, to extend the service life, and can be autoclaved.
- Powerful control system, which can realize segmented ladder centrifugation, preset program call, and graded password control, ensures the safety and reliability of the instrument, and facilitates the fine management.
- Adopting food-grade silicone rubber integral sealing ring, in line with GMP certification. The centrifuge is FDA approved.
- Optional PLC or microcontroller control system, to achieve PDF export printing function, specific technical performance details INBH2500R
- 10 programs of speed up curve / 11 programs of speed down curve, at the same time with the customization of the time of speed up and down, to further protect the effect of centrifugation, to prevent the sample from the second suspension and sinking.

02 Technical Parameters

Model	INL800R
Max speed	9000r/min
Max RCF	18807 ×g
Max capacity	6×2400ml
Speed accuracy	± 10r/min
Time setting	1s~99min59s/1min~99h 59min
Temperature setting	-20℃ ~+40℃
Temperature accuracy	±1℃
Compressor unit	FrenchTecumseh Compressor Unit R404a
Noise	<70db(A)
Power supply	AC380V 50Hz 40A
Consumption	7.5kw
Dimension(LxWxH)	900mm × 1000mm × 1200mm
Packing size(LxWxH)	980mm × 1100mm × 1460mm
Net weight (No rotor)	500kg

03 Technical Rotor parameters



No.1

- Capacity:6×500ml/400ml
- Max speed:8000r/min
- Max RCF:11260×g
- Adaptor:50ml、100ml、250ml



No.2

- Capacity:6×2×1000ml
- Max speed:4000r/min
- Max RCF:6260×g



No.2

- Capacity:6×2000ml
- Max speed:4000r/min
- Max RCF:6260×g



No.3

- Capacity:6×2400ml
- Max speed:4500r/min
- Max RCF:6950×g



No.4

- Capacity:6×1000ml
- Max speed:8000r/min
- Max RCF:15169×g
- Adaptor:100ml、250ml、300ml、500ml



No.5

- Capacity:6×1000ml (Carbon fiber)
- Max speed:9000r/min
- Max RCF:18807×g
- Adaptor:100ml、250ml、300ml、500ml

INDL-8M

Floor-standing High-Speed Refrigerated Centrifuge



Specifically designed for customers with large capacity needs, this model has a large sample handling capacity and is the preferred product for central blood stations, pharmaceuticals, bioengineering and other fields. Applicable to many specifications of blood bags.

01/ Technical Performance

- Maximum capacity is 2400mlx6, with a sample capacity of 14400ml.
- Microcomputer control, large torque AC frequency conversion motor drive, stable operation, low noise, high speed precision.
- Imported high-performance compressor, non-fluorine refrigerant R404a, in line with environmental requirements, good refrigeration effect.
- Touch panel, programmable operation, host operating parameters can be set according to demand and automatically stored.
- Large LCD display, humanized interface, easy and convenient operation. Real-time rpm/RCF reading conversion and setting, convenient and quick.
- Equipped with electronic door lock, with door cover protection, overspeed, over-temperature, imbalance and other protection functions; fault automatic alarm function, safe and reliable.
- 10 kinds of speed up curve, 11 kinds of deceleration curve, at the same time with the customization function of speed up and down time. Further protection
- Centrifugal effect, preventing the sample from secondary suspension and sinking.
- Adopt food-grade silicone rubber integral sealing ring, in line with GMP certification. The centrifuge is FDA approved.

02 Technical Parameters

Model	INDL -8M
Max speed	8000r/min
Max RCF	11260 ×g
Max capacity	6×2400ml
Speed accuracy	± 10r/min
Time setting	1s~99h99min59s
Temperature setting	-20 °C ~+40 °C
Temperature accuracy	± 1 °C
Compressor unit	FrenchTecumseh Compressor Unit R404a
Noise	<70db(A)
Power supply	AC380V 50Hz 40A
Consumption	7.5kw
Dimension(LxWxH)	900mm × 1000mm × 1300mm
Packing size(LxWxH)	980mm × 1100mm × 1580mm
Net weight (No rotor)	510kg

03 Technical Rotor parameters



No.2

- Capacity:6×500ml
- Max speed:8000r/min
- Max RCF:11260×g
- Adaptor:50ml、100ml、250ml



No.2

- Capacity:6×2×1000ml
- Max speed:4000r/min
- Max RCF:6260×g



No.2

- Capacity:6×2000ml
- Max speed:4000r/min
- Max RCF:6260×g



No.3

- Capacity:6×2400ml
- Max speed:4500r/min
- Max RCF:6950×g

INBL600R

Floor-standing High-Speed Refrigerated Centrifuge

Specifically designed for customers with large capacity needs, this model has a large sample handling capacity and is the preferred product for central blood stations, pharmaceuticals, bioengineering and other fields.



01/ Technical Performance

- High-definition, large-screen true-color TFT touch screen control, easy to operate, intuitive display, setup parameters and real-time operating parameters can be displayed on the same screen.
- Large capacity of operating data and fault records and other information, easy to track the operating history data information.
- Powerful control system, which can realize ten-step ladder centrifugation to meet diversified experimental needs (100 programs, each program is divided into 10 segments), program mode, curve mode and other functions. Preset program call function, the user can customize the editing of 100 groups of programs, hierarchical password control, to ensure the use of the instrument is safe and reliable, to facilitate the refinement of management.
- 10 programs with speed up curve / 11 programs with speed down curve, at the same time with the customization function of the speed up and down time. Further safeguard the centrifugal effect and prevent the sample from being suspended twice.
- Sample number can be entered to check the centrifugation record of each sample.
- Adopting imported high-performance compressor set, non-fluorine refrigerant R404a, in line with environmental requirements.
- Equipped with electronic door lock, with rotor identification, imbalance, door cover self-locking, overspeed, over-temperature and other procedures of protection, to ensure the safe operation of the instrument.
- Optional imported PC centrifugal bottle, transparent and intuitive, prolonging the service life, and can be autoclaved for it
- Adopt food-grade silicone rubber integral sealing ring, in line with GMP certification. Centrifuge to obtain U.S. FDA certification
- Optional automatic opening and closing of the door cover function, just touch the door open button on the control interface to easily realize the opening and closing of the door cover, no need to manually open and close the door. It has an intelligent anti-pinch device for the door cover.

02 Technical Parameters

Model	INBL600R
Max speed	6000r/min
Max RCF	6680 ×g
Max capacity	6×1200ml
Speed accuracy	± 10r/min
Time setting	1s~99min59s/1min~99h 59min
Temperature setting	-20 °C ~+40 °C
Temperature accuracy	± 1 °C
Compressor unit	FrenchTecumseh Compressor Unit R404a
Noise	<65db(A)
Power supply	AC220V 50Hz 30A
Consumption	5kw
Dimension(LxWxH)	900mm × 760mm × 1005mm
Packing size(LxWxH)	1020mm × 880mm × 1105mm
Net weight (No rotor)	500kg

03 Technical Rotor parameters



No.1

- Capacity:6×500ml/400ml
- Max speed:6000r/min
- Max RCF:6680×g
- Adaptor:50ml、 100ml、 250ml



No.2

- Capacity:6×1200ml /1000ml
- Max speed:4200r/min
- Max RCF:5100×g

INL600R

Floor-standing High-Capacity Refrigerated Centrifuge



Specifically designed for customers with large capacity needs, this model has a large sample handling capacity and is the preferred product for central blood stations, pharmaceuticals, bioengineering and other fields.

01/ Technical Performance

- The maximum capacity can be up to 1200mx6, a sample processing capacity of 7200m.
- Microcomputer control, large torque AC frequency conversion motor drive, stable operation, low noise, high speed accuracy
- Imported high-performance compressor, non-fluorine refrigerant R404a, in line with environmental protection requirements, good refrigeration effect.
- Touch screen control, humanized interface, programmable operation, the host operating parameters can be set according to demand and automatically stored, simple and convenient operation.
- Real-time rpm/RCF readings between conversion and setting, convenient and quick.
- Equipped with electronic door lock, with rotor identification, door cover protection, overspeed, over-temperature, imbalance and other protection functions; the automatic alarm function, safe and reliable.
- 10 kinds of speed up curve, 11 kinds of deceleration curve, at the same time with the customization function of speed up and down time. Further safeguard the centrifugal effect, prevent the sample from the second suspension and sinking.
- Adopt food-grade silicone rubber integral sealing ring, in line with GMP certification. The centrifuge is FDA approved.

02 Technical Parameters

Model	INL600R
Max speed	6000r/min
Max RCF	6680 ×g
Max capacity	6×1200ml
Speed accuracy	± 10r/min
Time setting	1s~99min59s/1min~99h 59min
Temperature setting	-20 °C ~+40 °C
Temperature accuracy	± 1°C
Compressor unit	FrenchTecumseh Compressor Unit R404a
Noise	<65db(A)
Power supply	AC220V 50Hz 30A
Consumption	5kw
Dimension(LxWxH)	710mm × 840mm × 1140mm
Packing size(LxWxH)	890mm × 960mm × 1400mm
Net weight (No rotor)	310kg

03 Technical Rotor parameters



No.1

- Capacity:6×500ml/400ml
- Max speed:6000r/min
- Max RCF:6680×g
- Adaptor:50ml、100ml、250ml



No.2

- Capacity:6×1200ml /1000ml
- Max speed:4200r/min
- Max RCF:5100×g

INDL-6M

Floor-standing High-Speed Refrigerated Centrifuge



Specifically designed for customers with large capacity needs, this model has a large sample handling capacity and is the preferred product for central blood stations, pharmaceuticals, bioengineering and other fields.

01/ Technical Performance

- The maximum capacity can be 1200mlx6, and the sample processing capacity can be 7200ml.
- Microcomputer control, large torque AC frequency conversion motor drive, stable operation, low noise, high speed accuracy.
- Imported high-performance compressor, non-fluorine refrigerant R404a, in line with environmental requirements, good refrigeration effect.
- Touch panel, programmable operation, host operating parameters can be set according to demand and automatically stored.
- Large LCD display, humanized interface, easy and convenient operation.
- Real-time rpm/RCF reading conversion and setting, convenient and quick.
- Equipped with electronic door lock, with door cover protection, overspeed, over-temperature, imbalance and other protection functions; fault automatic alarm function, safe and reliable.
- 10 kinds of speed up curve, 11 kinds of deceleration curve, at the same time with the customization function of speed up and down time. Further safeguard the centrifugal effect, prevent the sample from secondary suspension and sinking.
- Adopt food-grade silicone rubber integral sealing ring, in line with GMP certification. The centrifuge is FDA approved.

02 Technical Parameters

Model	INDL -6M
Max speed	6000r/min
Max RCF	6680 ×g
Max capacity	6×1200ml
Speed accuracy	±10r/min
Time setting	1s~99h99min59s
Temperature setting	-20 °C ~+40 °C
Temperature accuracy	±1 °C
Compressor unit	FrenchTecumseh Compressor Unit R404a
Noise	<65db(A)
Power supply	AC220V 50Hz 30A
Consumption	5kw
Dimension(LxWxH)	710mm ×840mm ×1200mm
Packing size(LxWxH)	890mm ×960mm ×1450mm
Net weight (No rotor)	320kg

03 Technical Rotor parameters



No.1

- Capacity:6×500ml/400ml
- Max speed:6000r/min
- Max RCF:6680×g
- Adaptor:50ml、100ml、250ml



No.2

- Capacity:6×1200ml /1000ml
- Max speed:4200r/min
- Max RCF:5100×g

INDL-5M

Floor-standing High-Speed Refrigerated Centrifuge



Widely used in clinical medicine, biochemistry, genetic engineering, immunology and other fields, suitable for radioimmunization, water treatment, biochemistry, biopharmaceuticals, separation and purification of blood products.

01/ Technical Performance

- Microcomputer control, large torque AC frequency conversion motor drive, stable operation, low noise, high speed accuracy.
- Imported high-performance compressor, non-fluorine refrigerant R404a, in line with environmental requirements, good refrigeration effect.
- Touch panel, programmable operation, host operating parameters can be set according to demand and automatically stored.
- Digital screen display, humanized interface, easy and convenient operation.
- Real-time rpm/RCF reading conversion and setting, convenient and quick.
- Equipped with electronic door lock, with door cover protection, overspeed, over-temperature, imbalance and other protection functions; fault automatic alarm function, safe and reliable.
- 9 programs of speed curve/10 programs of speed curve, can be set according to the need to raise / lower the speed time.
- Adopting edible silicone rubber sealing ring, in line with GMP certification. The centrifuge is FDA approved.

02 Technical Parameters

Model	INDL -5M
Max speed	5000r/min
Max RCF	4100 ×g
Max capacity	4×1000ml
Speed accuracy	±10r/min
Time setting	1s~99min59s
Temperature setting	-20℃ ~+40℃
Temperature accuracy	±1℃
Compressor unit	FrenchTecumseh Compressor Unit R404a
Noise	<65db(A)
Power supply	AC220V 50Hz 20A
Consumption	2kw
Dimension(LxWxH)	690mm ×710mm ×1100mm
Packing size(LxWxH)	740mm ×830mm ×1300mm
Net weight (No rotor)	170kg

03 Technical Rotor parameters



No.1

- Capacity:6×300ml
- Max speed:5000r/min
- Max RCF:3850×g
- Adaptor:50ml、100ml



No.2

- Capacity:4×500ml
- Max speed:4000r/min
- Max RCF:3780×g

IND5B

Floor-standing High-Speed Refrigerated Centrifuge



A new generation of intelligent centrifuge, widely used in clinical medicine, biochemistry, genetic engineering, immunology and other fields, is the first choice for large quantities of vacuum blood collection tubes processing in major hospitals.

01/ Technical Performance

- Microcomputer control, large torque AC frequency conversion motor drive, stable operation, low noise, high speed accuracy.
- Touch panel, programmable operation, host operating parameters can be set according to demand and automatically stored.
- Large LCD screen display, humanized interface, easy and convenient operation.
- Real-time rpm/RCF reading conversion and setting, convenient and quick.
- Equipped with electronic door lock, with door cover protection, overspeed, unbalance and other protection functions; fault automatic alarm function is safe and reliable.
- 9 programs of speed up curve/10 programs of speed down curve, can be set according to the need to speed up/down time.
- Adopting food-grade silicone rubber integral sealing ring, in line with GMP certification. The centrifuge is FDA approved.

02 Technical Parameters

Model	IND5B
Max speed	5000r/min
Max RCF	4640 ×g
Max capacity	4 × 1000ml
Speed accuracy	± 10r/min
Time setting	1s~99h99min59s
Compressor unit	French Tecumseh Compressor Unit R404a
Noise	<65db(A)
Power supply	AC220V 50Hz 20A
Consumption	1.5kw
Dimension(LxWxH)	710mm × 840mm × 1200mm
Packing size(LxWxH)	890mm × 960mm × 1450mm
Net weight (No rotor)	260kg

03 Technical Rotor parameters



No.1

- Capacity: 6 × 500ml
- Max speed: 5000r/min
- Max RCF: 4640 ×g
- Adaptor: 50ml, 100ml, 250ml



No.2

- Capacity: 4 × 100ml
- Max speed: 4000r/min
- Max RCF: 4100 ×g



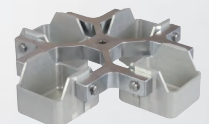
No.4

- Capacity: 2 × 2 × 96holes
- Max speed: 4000r/min
- Max RCF: 2200 ×g



No.5

- Capacity: 4 × 2 × 96holes
- Max speed: 4000r/min
- Max RCF: 3040 ×g



No.5

- Capacity: Swing-our Bucket rotor
- Max speed: 4000r/min
- Max RCF: 3040 ×g

INDL-5B/IND5M

Floor-standing High-Capacity Centrifuge/Floor-standing Low Speed Centrifuge



Widely used in clinical medicine, biology, genetic engineering, immunology and other fields, applicable to radioimmunity, water treatment, biochemistry, biopharmaceuticals, separation and purification of blood products.

01/ Technical Performance

- Microcomputer control, large torque AC frequency conversion motor drive, stable operation, low noise, high speed accuracy.
- Touch panel, programmable operation, host operating parameters can be set according to demand and automatically stored.
- Digital screen display, humanized interface, easy and convenient operation.
- Real-time rpm/RCF reading conversion and setting, convenient and quick.
- Equipped with electronic door lock, with door cover protection, over-speed, over-temperature, imbalance and other protection functions; fault automatic alarm function, safe and reliable.
- 9 program speed curve / 10 program speed curve, can be set according to the need to raise / lower the speed time.
- Adopting edible silicone rubber sealing ring, in line with GMP certification. Centrifuges are FDA approved.

02/ Technical Parameters

Model	INDL -5B	IND5M
Max speed	5000r/min	5000r/min
Max RCF	3780×g	3780×g
Max capacity	4×750ml	4×750ml
Speed accuracy	±10r/min	±10r/min
Time setting	1s~99min59s	1s~99min59s
Temperature setting	-20℃ ~+40℃	/
Temperature accuracy	±1℃	/
Compressor unit	French Tecumseh Compressor Unit R404a	/
Noise	<65db(A)	<65db(A)
Power supply	AC220V 50Hz 20A	AC220V 50Hz 20A
Consumption	2kw	1.1kw
Dimension(LxWxH)	650mm×710mm×1100mm	650mm×710mm×1100mm
Packing size(LxWxH)	740mm×830mm×1300mm	740mm×830mm×1300mm
Net weight (No rotor)	170kg	140kg

03 Technical Rotor parameters



No.1

- Max speed:4000r/min
- Max RCF:3780×g



No.2

- Capacity:6×50ml
- Max speed:5000r/min
- Max RCF:3780×g
- Adaptor:15ml、20ml



No.3

- Capacity:4×750ml
- Max speed:4000r/min
- Max RCF:3780×g



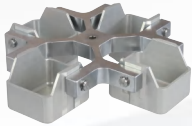
No.3

- Capacity:4×500ml
- Max speed:4000r/min
- Max RCF:3780×g



No.4

- Capacity:2×2×96holes
- Max speed:4000r/min
- Max RCF:2200×g



No.5

- Capacity:Swing-our Bucket rotor
- Max speed:4000r/min
- Max RCF:3040×g



No.5

- Capacity:4×2×96holes
- Max speed:4000r/min
- Max RCF:3040×g

INTGL-25M

Tabletop High-Speed and High-Capacity Refrigerated Centrifuge

A new generation of intelligent centrifuge with international advanced level, superb, intelligent control system, is the first choice for molecular biology, protein, DNA, RNA, cell separation, clinical medicine



01/ Technical Performance

- Large size HD touch screen control, easy to operate, intuitive display, setup parameters and real-time operating parameters can be displayed on the same screen.
- Large capacity data storage and fault records and other information, can store more than 5000 history records, convenient for users to track the operation of historical data information, can be exported via USB history data and machine program parameters.
- Adopt adsorption type door lock, easy to press and close the door cover to lock the centrifuge.
- RS232 serial port is optional, which is convenient for collecting screen parameter information.
- The core component motor is imported from Germany and has passed 3C certification.
- Imported high-performance compressor, non-fluorine refrigerant R404a, in line with environmental requirements.
- With program mode, curve mode, preset program call function, three levels of password control function to ensure the use of the instrument is safe and reliable, to facilitate the refinement of management. The system can record the speed, temperature and lift curve of the last operation.
- Safe and stable centrifugal performance, the highest speed up to 25000r/min, a variety of specifications of the rotor can be selected to easily help you realize the rapid separation of samples, is the ideal alternative to the floor-type high-speed centrifuge products.
- Rotor automatic identification, with imbalance, over-speed, over-temperature, door cover protection and other protection functions.
- Adopting food-grade silicone rubber overall sealing ring, in line with GMP certification. Centrifuge to obtain U.S. FDA certification
- Optional three-axis gyro imbalance detector, with high sensitivity of imbalance detection, high detection reliability, can be adjusted according to different centrifuge damper detection control valve, fast response speed, can be adjusted on-line valve, easy to adjust, long service life, good shock and vibration resistance and other advantages.
- Machine standby can be delayed off the compressor refrigeration, close the door cover can be delayed open the compressor refrigeration, energy saving and environmental protection
- The user can customize the naming and editing of 99 ladder centrifugal program, each ladder centrifugal program a total of 10 segments of centrifugal process to meet the diversified experimental needs.

02 Technical Parameters

Model	INTGL -25M
Max speed	25000r/min
Max RCF	44720×g
Max capacity	6×100ml
Speed accuracy	±10r/min
Time setting	1s~99min59s/1min~99h 59min
Temperature setting	-20℃ ~+40℃
Temperature accuracy	±1℃
Compressor unit	FrenchTecumsehCompressor Unit R404a
Noise	<65db(A)
Power supply	AC220V,50Hz -60Hz
Consumption	1.5kw
Dimension(LxWxH)	734mm×620mm×445mm
Packing size(LxWxH)	910mm×720mm×620mm
Net weight (No rotor)	100kg

03 Technical Rotor parameters



No.1

- Capacity:12×1.5ml/2.2ml
- Max speed:25000r/min
- Max RCF:44720×g
- Adaptor:0.2ml、 0.5ml



No.2

- Capacity:12×15ml
- Max speed:16000r/min
- Max RCF:30194×g
- Adaptor:0.5ml、 1.5ml



No.3

- Capacity:12×10ml
- Max speed:19000r/min
- Max RCF:36715×g
- Adaptor:1.5ml、 5ml



No.4

- Capacity:6×50ml(Aluminum Alloy or Carbon fiber)
- Max speed:16500r/min
- Max RCF:28854×g
- Adaptor:1.5ml、 5ml、 10ml、 15ml、 20ml、 30ml



No.5

- Capacity:48×1.5ml/2.2ml
- Max speed:19000r/min
- Max RCF:38987×g
- Adaptor:0.2ml、 0.5ml



No.6

- Capacity:8×50ml(Carbon fiber)
- Max speed:16000r/min
- Max RCF:27762×g
- Adaptor:1.5ml、 5ml、 10ml、 15ml、 20ml、 30ml



No.7

- Capacity:24×1.5ml/2.2ml
- Max speed:21000r/min
- Max RCF:41908×g
- Adaptor:0.2ml、 0.5ml



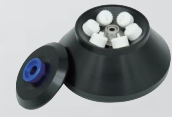
No.8

- Capacity:6×85ml
- Max speed:12000r/min
- Max RCF:15805×g



No.9

- Capacity:6×100ml(Carbon fiber)
- Max speed:13500r/min
- Max RCF:21800×g
- Adaptor:10ml、 20ml



No.10

- Capacity:6×30ml
- Max speed:19000r/min
- Max RCF:31883×g



No.11

- Capacity:12×5ml
- Max speed:16500r/min
- Max RCF:19175×g
- Adaptor:0.5ml、 1.5ml

INTGL-21M

Tabletop High-Speed and High-Capacity Refrigerated Centrifuge

It is widely used in clinical medicine, biochemistry, genetic engineering, immunology and other fields. It is a necessary instrument for centrifugal separation in hospitals, scientific research units and colleges and universities at all levels.



01/ Technical Performance

- Microcomputer control, high-definition large screen LCD, intuitive controls to simplify the operation, user-friendly operation of the touch-screen interface, to provide a variety of operating parameters and ideal performance of the processing state of the detailed information, easy to use.
- With program mode, curve mode, preset program call function, three-level password control function to ensure the use of the instrument is safe and reliable, to facilitate the refinement of management. The system can record the speed, temperature and speed curve of the last operation.
- It has 9 programs of speed-up curve and 10 programs of speed-down curve, and the time of speed-up and down can be set according to the need, so that the centrifugal effect can reach the best.
- With rotor recognition function, automatically recognize different rotors, prevent users from setting wrong rotor number parameters.
- Adopt imported high-performance compressor, non-fluorine refrigerant R404A, machine standby can be delayed off the compressor refrigeration, close the door can be delayed open the compressor refrigeration, energy saving and environmental protection.
- With door cover protection, overspeed, imbalance and other protection functions to ensure the safe operation of the instrument.
- Adopting food-grade silicone rubber integral sealing ring, in line with GMP certification. The centrifuge obtains the U.S. FDA certification.

02 Technical Parameters

Model	INTGL -21M
Max speed	21000r/min
Max RCF	30642×g
Max capacity	4×750ml
Speed accuracy	±10r/min
Time setting	1s~99min59s/1min~99h 59min
Temperature setting	-20°C ~+40°C
Temperature accuracy	±1°C
Compressor unit	FrenchTecumsehCompressor Unit R404a
Noise	<65db(A)
Power supply	AC220V,50Hz -60Hz
Consumption	1.5kw
Dimension(LxWxH)	734mm×620mm×445mm
Packing size(LxWxH)	910mm×720mm×620mm
Net weight (No rotor)	100kg

03 Technical Rotor parameters



No.1

- Capacity:12×1.5ml/2.2ml
- Max speed:21000r/min
- Max RCF:30642×g
- Adaptor:0.2ml、 0.5ml



No.2

- Capacity:12×5ml
- Max speed:16500r/min
- Max RCF:19175×g
- Adaptor:0.5ml、 1.5ml



No.3

- Capacity:6×30ml
- Max speed:15000r/min
- Max RCF:23120×g



No.3

- Capacity:12×10ml/8×15ml (Conical)
- Max speed:15000r/min
- Max RCF:23120×g
- Adaptor:1.5ml、 5ml



No.4

- Capacity:6×50ml
- Max speed:13500r/min
- Max RCF:19166×g



No.7

- Capacity:24×1.5ml/2.2ml
- Max speed:16500r/min
- Max RCF:26050×g
- Adaptor:0.2ml、 0.5ml



No.8

- Capacity:6×85ml
- Max speed:12000r/min
- Max RCF:15805×g
- Adaptor:15ml、 20ml、 50ml



No.9

- Capacity:6×100ml
- Max speed:10000r/min
- Max RCF:11960×g
- Adaptor:10ml、 20ml



No.10

- Capacity:48×1.5ml/2.2ml
- Max speed:15500r/min
- Max RCF:26307×g
- Adaptor:0.2ml、 0.5ml



No.11

- Capacity:12×15ml
- Max speed:14000r/min
- Max RCF:22011×g
- Adaptor:0.5ml、 1.5ml



No.12

- Capacity:8×50ml
- Max speed:12000r/min
- Max RCF:17615×g
- Adaptor:10ml、 20ml
- Adaptor:1.5ml、 5ml、 10ml、 15ml、 20ml、 30ml

INTGL-20.5M

Tabletop High-Speed and High-Capacity Refrigerated Centrifuge

It is widely used in clinical medicine, biochemistry, genetic engineering, immunology and other fields. It is a necessary instrument for centrifugal separation in hospitals, scientific research units and colleges and universities at all levels.

01/ Technical Performance

- Microcomputer control, high-definition large-screen LCD, intuitive controls to simplify operation
- Touch panel, programmable operation, host operating parameters can be set according to demand and automatic storage
- Adopt food-grade silicone rubber integral sealing ring, in line with GMP certification. The centrifuge obtains the U.S. FDA certification
- 9 programs of speed up curve/10 programs of speed down curve, rpm/RCF readings between the conversion and setting, convenient and quick.
- With a number of protection functions, such as overspeed, unbalance, over temperature, door cover, etc., to ensure the safety and reliability of the instrument.
- Large-capacity centrifugal chamber, space-saving design, rich rotor specifications, realizing the multi-purpose machine
- Adopting imported high-performance compressor, non-fluorine refrigerant R404A, the compressor can be delayed off after opening the door cover and machine standby refrigeration, and the compressor can be delayed on after closing the door cover refrigeration, energy-saving and environmentally friendly.

02 Technical Parameters

Model	INTGL -20.5M
Max speed	20500r/min
Max RCF	29200×g
Max capacity	4×750ml
Speed accuracy	±10r/min
Time setting	1min~99h 59min
Temperature setting	-20°C ~+40°C
Temperature accuracy	±1°C
Compressor unit	French Tecumseh Compressor Unit R404a
Noise	<65db(A)
Power supply	AC220V, 50Hz -60Hz
Consumption	1.5kw
Dimension(LxWxH)	734mm×620mm×445mm
Packing size(LxWxH)	910mm×720mm×620mm
Net weight (No rotor)	100kg

03 Technical Rotor parameters



No.1

- Capacity: 12×1.5ml/2.2ml
- Max speed: 20500r/min
- Max RCF: 29200×g
- Adaptor: 0.2ml、0.5ml



No.2

- Capacity: 12×5ml
- Max speed: 16500r/min
- Max RCF: 19175×g
- Adaptor: 0.5ml、1.5ml



No.3

- Capacity: 6×30ml
- Max speed: 15000r/min
- Max RCF: 23120×g



No.3

- Capacity: 12×10ml/8×15ml (Conical)
- Max speed: 15000r/min
- Max RCF: 23120×g
- Adaptor: 1.5ml、5ml



No.4

- Capacity: 6×50ml
- Max speed: 13500r/min
- Max RCF: 19166×g



No.7

- Capacity: 24×1.5ml/2.2ml
- Max speed: 16500r/min
- Max RCF: 26050×g
- Adaptor: 0.2ml、0.5ml



No.8

- Capacity: 6×85ml
- Max speed: 12000r/min
- Max RCF: 15805×g
- Adaptor: 15ml、20ml、50ml



No.9

- Capacity: 6×100ml
- Max speed: 10000r/min
- Max RCF: 11960×g
- Adaptor: 10ml、20ml



No.10

- Capacity: 48×1.5ml/2.2ml
- Max speed: 15500r/min
- Max RCF: 26307×g
- Adaptor: 0.2ml、0.5ml

INTGL-20M

Tabletop High-Speed Refrigerated Centrifuge



It is widely used in clinical medicine, biochemistry, genetic engineering, immunology and other fields. It is a necessary instrument for centrifugal separation in hospitals, scientific research units and colleges and universities at all levels.

01/ Technical Performance

- High-definition, resolution 800x480, large-screen true-color TFT touch screen control, setup, operation interface in two interfaces, intuitive, focused. Easy to operate, intuitive display, setup parameters and real-time operating parameters can be displayed on the same screen.
- The prompt function of input window shows the information of data and the range of selection when inputting, the parameter information corresponding to each rotor can be displayed synchronously when selecting rotor, which is intuitive and improves the accuracy of selection, and it can be directly selected after selection, and all the preset programs can be displayed synchronously when preset programs are selected, and the programs used can be directly selected.
- 5000 large-capacity historical operating data records and multiple fault records can be queried, convenient for data analysis and tracking of operating history data information.
- Powerful control system, can achieve ten-step ladder centrifugal, to meet the diversified experimental needs (100 programs, each program is divided into 10 segments), program mode, curve mode and other functions. Preset program call function, the user can customize the editing of 100 groups of programs, hierarchical password control, to ensure the use of safe and reliable instruments, to facilitate the refinement of management.
- Alarm and other pop-up windows with semi-transparent function, synchronized visualization of the next layer of the content, the display effect is better.
- With rotor recognition function, equipped with electronic door lock, with imbalance, door cover, overspeed, over-temperature and other programs of protection to ensure the safe operation of the instrument.
- With 9 programs of speed up curve / 10 programs of speed down curve, can be set according to the requirements of the different gears of the speed up and down, part of the rotor can realize the rapid lift function.
- In the program mode, you can enter the name of the material number, easy to call the saved material number, distinguish the material and different materials centrifugal parameters required.
- With PID dynamic adjustment function, make the temperature control more accurate.
- Energy-saving and environmental protection control mode, equipment after opening a specific time within the refrigeration system automatically stops, cover the door cover after the system automatically opens the refrigeration function, to avoid no operation of the refrigeration system continues to run and loss of equipment. And can be low-speed dynamic pre-cooling, so that the centrifugal chamber control temperature accuracy is more precise.

02 Technical Parameters

Model	INTGL -20M
Max speed	20000r/min
Max RCF	27800×g
Max capacity	4×100ml
Speed accuracy	±10r/min
Time setting	1s~99min59s/1min~99h 59min
Temperature setting	-20°C ~+40°C
Temperature accuracy	±1°C
Compressor unit	FrenchTecumsehCompressor Unit R404a
Noise	<65db(A)
Power supply	AC220V,50Hz -60Hz
Consumption	1.2kw
Dimension(LxWxH)	600mm×470mm×330mm
Packing size(LxWxH)	720mm×610mm×430mm
Net weight (No rotor)	50kg

03 Technical Rotor parameters



No.1

- Capacity:12×1.5ml/2.2ml
- Max speed:20000r/min
- Max RCF:27800×g
- Adaptor:0.2ml、0.5ml



No.2

- Capacity:24×1.5ml/2.2ml
- Max speed:16000r/min
- Max RCF:23755×g
- Adaptor:0.2ml、0.5ml



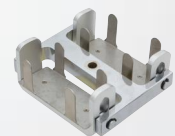
No.3

- Capacity:10×5ml
- Max speed:16000r/min
- Max RCF:17280×g
- Adaptor:0.5ml、1.5ml



No.3

- Capacity:12×5ml
- Max speed:16000r/min
- Max RCF:17280×g
- Adaptor:0.5ml、1.5ml



No.4

- Capacity:2×48holes
- Max speed:3000r/min
- Max RCF:1400×g



No.5

- Capacity:36×0.5ml
- Max speed:13000r/min
- Max RCF:16760×g



No.5

- Capacity:48×0.5ml
- Max speed:13000r/min
- Max RCF:16760×g



No.5

- Capacity:12×10ml
- Max speed:13000r/min
- Max RCF:16760×g
- Adaptor:1.5ml、5ml



No.5

- Capacity:8×15ml(Conical)
- Max speed:13000r/min
- Max RCF:16760×g
- Adaptor:1.5ml、5ml



No.6

- Capacity:6×50ml
- Max speed:12000r/min
- Max RCF:13000×g
- Adaptor:15ml、20ml



No.6

- Capacity:4×100ml
- Max speed:12000r/min
- Max RCF:13000×g
- Adaptor:10ml、20ml



No.7

- Capacity:4×10ml
- Max speed:6000r/min
- Max RCF:3200×g



No.8

- Capacity:48×1.5ml/2.2ml
- Max speed:14000r/min
- Max RCF:21461×g
- Adaptor:0.2ml、0.5ml

INTGL-18.5M/INTGL-18M

Tabletop High-Speed Refrigerated Centrifuge

It is widely used in clinical medicine, biochemistry, genetic engineering, immunology and other fields. It is a necessary instrument for centrifugal separation in hospitals, scientific research units and colleges and universities at all levels.



01/ Technical Performance

- Microcomputer control, large torque AC frequency conversion motor drive, stable operation, low noise, high speed accuracy
- Touch panel, programmable operation, the host operating parameters can be set according to the demand and automatically stored.
- Liquid crystal display, humanized interface, easy and convenient operation.
- Real-time rpm/VRCF readings between conversion and setting, convenient and quick.
- Equipped with electronic door lock, with door cover protection, over-speed, over-temperature and other protection functions; fault automatic alarm function, safe and reliable.
- Adopting food-grade silicone rubber integral sealing ring, in line with GMP certification. Centrifuge to obtain the U.S. FDA certification
- 9 program speed curve / 10 program speed curve, according to the need to set up / down time

02/ Technical Parameters

Model	INTGL -18.5M	INTGL -18M
Max speed	18500r/min	18000r/min
Max RCF	23755×g	
Max capacity	4×100ml	
Speed accuracy	±10r/min	
Time setting	1min~99h59min	
Temperature setting	-20°C ~+40°C	
Temperature accuracy	±1°C	
Compressor unit	French Tecumseh Compressor Unit R404a	
Noise	<65db(A)	
Power supply	AC220V 50Hz 15A	
Consumption	1.2kw	
Dimension(LxWxH)	600mm×470mm×330mm	
Packing size(LxWxH)	720mm×610mm×430mm	
Net weight (No rotor)	50kg	

03 Technical Rotor parameters



No.1

- Capacity:12×1.5ml/2.2ml Max
- speed:18500r/min/18000r/min
- Max RCF:23755×g
- Adaptor:0.2ml、 0.5ml



No.2

- Capacity:24×1.5ml/2.2ml
- Max speed:16000r/min
- Max RCF:23755×g
- Adaptor:0.2ml、 0.5ml



No.3

- Capacity:10×5ml
- Max speed:13000r/min
- Max RCF:11400×g
- Adaptor:0.5ml、 1.5ml



No.3

- Capacity:12×5ml
- Max speed:13000r/min
- Max RCF:11400×g
- Adaptor:0.5ml、 1.5ml



No.4

- Capacity:2×48holes
- Max speed:3000r/min
- Max RCF:1400×g



No.5

- Capacity:36×0.5ml
- Max speed:13000r/min
- Max RCF:16760×g



No.5

- Capacity:48×0.5ml
- Max speed:13000r/min
- Max RCF:16760×g



No.5

- Capacity:12×10ml
- Max speed:13000r/min
- Max RCF:16760×g
- Adaptor:1.5ml、 5ml



No.5

- Capacity:8×15ml(Conical)
- Max speed:13000r/min
- Max RCF:16760×g
- Adaptor:1.5ml、 5ml



No.6

- Capacity:6×50ml
- Max speed:12000r/min
- Max RCF:13000×g
- Adaptor:15ml、 20ml



No.6

- Capacity:4×100ml
- Max speed:12000r/min
- Max RCF:13000×g
- Adaptor:10ml、 20ml



No.7

- Capacity:4×10ml
- Max speed:6000r/min
- Max RCF:3200×g



No.8

- Capacity:48×1.5ml/2.2ml
- Max speed:14000r/min
- Max RCF:21461×g
- Adaptor:0.2ml、 0.5ml

INTGL-16M

Tabletop High-Speed Refrigerated Centrifuge



It is widely used in clinical medicine, biochemistry, genetic engineering, immunology and other fields. It is a necessary instrument for centrifugal separation in hospitals, scientific research units and colleges and universities at all levels.

01/ Technical Performance

- Microcomputer control, large torque AC frequency conversion motor drive, stable operation, low noise, high speed accuracy
- Touch panel, programmable operation, the host operating parameters can be set according to the demand and automatically stored.
- Liquid crystal display, humanized interface, easy and convenient operation.
- Real-time rpm/VRCF readings between conversion and setting, convenient and quick.
- Equipped with electronic door lock, with door cover protection, over-speed, over-temperature and other protection functions; fault automatic alarm function, safe and reliable.
- Adopting food-grade silicone rubber integral sealing ring, in line with GMP certification. Centrifuge to obtain the U.S. FDA certification
- 9 program speed curve / 10 program speed curve, according to the need to set up / down time

02/ Technical Parameters

Model	INTGL -16M
Max speed	16000r/min
Max RCF	17800×g
Max capacity	6×50ml
Speed accuracy	±30r/min
Time setting	1min~99h59min
Temperature setting	-20°C ~+40°C
Temperature accuracy	±1°C
Compressor unit	French Tecumseh Compressor Unit R404a
Noise	<65db(A)
Power supply	AC220V 50Hz 15A
Consumption	1.2kw
Dimension(LxWxH)	600mm×470mm×330mm
Packing size(LxWxH)	720mm×610mm×430mm
Net weight (No rotor)	50kg

03 Technical Rotor parameters



No.1

- Capacity:12×1.5ml/2.2ml
- Max speed:16000r/min
- Max RCF:17800×g
- Adaptor:0.2ml、 0.5ml



No.2

- Capacity:24×1.5ml/2.2ml
- Max speed:13200r/min
- Max RCF:16110×g
- Adaptor:0.2ml、 0.5ml



No.3

- Capacity:10×5ml
- Max speed:13000r/min
- Max RCF:11400×g
- Adaptor:0.5ml、 1.5ml



No.3

- Capacity:12×5ml
- Max speed:13000r/min
- Max RCF:11400×g
- Adaptor:0.5ml、 1.5ml



No.4

- Capacity:2×48holes
- Max speed:3000r/min
- Max RCF:1400×g



No.5

- Capacity:36×0.5ml
- Max speed:13000r/min
- Max RCF:14300×g



No.5

- Capacity:48×0.5ml
- Max speed:13000r/min
- Max RCF:14300×g



No.5

- Capacity:12×10ml
- Max speed:13000r/min
- Max RCF:14300×g
- Adaptor:1.5ml、 5ml



No.5

- Capacity:8×15ml(Conical)
- Max speed:13000r/min
- Max RCF:14300×g
- Adaptor:1.5ml、 5ml



No.6

- Capacity:6×50ml
- Max speed:12000r/min
- Max RCF:10950×g
- Adaptor:15ml、 20ml



No.6

- Capacity:4×10ml
- Max speed:6000r/min
- Max RCF:3200×g

INH-18.5R

Tabletop High-Speed Refrigerated Centrifuge

It is widely used in clinical medicine, biochemistry, genetic engineering, immunology and other fields. It is a necessary instrument for centrifugal separation in hospitals, scientific research units and colleges and universities at all levels.



01/ Technical Performance

- 7 inch high-definition true color touch screen control, easy to operate, intuitive display, setup parameters and real-time operating parameters can be displayed on the same screen.
- Large capacity data storage and fault records and other information, can store more than 5000 historical records, convenient for users to track the operation of historical data information, data can be exported via USB.
- User can customize the naming and editing of 99 ladder centrifugation programs, each ladder centrifugation program has a total of 10 segments of centrifugation process, to meet the needs of diversified experiments.
- With program mode, curve mode, preset program call function, three-level password control function to ensure the safety and reliability of using the instrument, to facilitate the refinement of management. The system can record the speed, temperature and speed curve of the last run.
- 9 programs of speed up curve and 10 programs of speed down curve, according to the need to set the time of speed up and down, so that the centrifugal effect to achieve the best.
- Part of the rotor can realize fast rise and fall.
- With rotor identification function, automatically identify 19 different rotors, to prevent users from setting the wrong rotor number parameters.
- Equipped with adsorption type door lock, easy to close the door cover, safe lock centrifugal.
- Imported high-performance compressor, non-fluorine refrigerant R404A, machine standby can be delayed off the compressor refrigeration after closing the door cover can be delayed to open the compressor refrigeration, energy saving and environmental protection.
- With door cover protection, overspeed, over-temperature and other protection functions to ensure the safe operation of the instrument.
- RS232 serial port can be optional, easy to collect screen parameter information.

02 Technical Parameters

Model	INH -18.5R
Max speed	18500r/min
Max RCF	29302×g
Max capacity	4×100ml
Speed accuracy	±10r/min
Time setting	1s~99min59s/1min~99h 59min
Temperature setting	-20°C ~+40°C
Temperature accuracy	±1°C
Compressor unit	French Tecumseh Compressor Unit R404a
Noise	<65db(A)
Power supply	AC220V 50Hz 10A
Consumption	1.2kw
Dimension(LxWxH)	680mm×380mm×350mm
Packing size(LxWxH)	780mm×480mm×400mm
Net weight (No rotor)	60kg

03 Technical Rotor parameters



No.1

- Capacity:24×1.5ml/2.2ml
- Max speed:17500r/min
- Max RCF:29302×g



No.2

- Capacity:12×5ml
- Max speed:15000r/min
- Max RCF:15840×g
- Adaptor:0.5ml、 1.5ml



No.3

- Capacity:12×10ml
- Max speed:13000r/min
- Max RCF:17370×g
- Adaptor:1.5ml、 5ml



No.4

- Capacity:6×50ml (Round)
- Max speed:13000r/min
- Max RCF:17947×g



No.5

- Capacity:6×50ml (Conical)
- Max speed:12000r/min
- Max RCF:15292×g



No.6

- Capacity:4×100ml
- Max speed:10000r/min
- Max RCF:10744×g



No.7

- Capacity:30×1.5ml/2.2ml
- Max speed:14000r/min
- Max RCF:22140×g



No.8

- Capacity:48×1.5ml/2.2ml
- Max speed:13000r/min
- Max RCF:18525×g



No.9

- Capacity:6×8×0.2ml PCR tube
- Max speed:13000r/min
- Max RCF:16020×g



No.10

- Capacity:24 capillaries
- Max speed:13000r/min
- Max RCF:17369×g



No.11

- Capacity:24×1.5ml/2.2ml
- Max speed:13000r/min
- Max RCF:16816×g



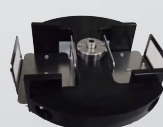
No.12

- Capacity:8×15ml
- Max speed:12000r/min
- Max RCF:13200×g



No.13

- Capacity:4×100ml
- Max speed:4500r/min
- Max RCF:3056×g



No.14

- Capacity:2×2×96holes
- Max speed:4000r/min
- Max RCF:2200×g



No.15

- Capacity:12×1.5ml/2.2ml
- Max speed:18500r/min
- Max RCF:23797×g



No.16

- Capacity:12×15ml
- Max speed:12000r/min
- Max RCF:13527×g



No.17

- Capacity:8×50ml
- Max speed:10000r/min
- Max RCF:12233×g
- Adaptor:1.5ml、 5ml、 10ml、 15ml、 20ml、 30ml



No.18

- Capacity:8×15ml(Conical)
- Max speed:4500r/min
- Max RCF:3300×g



No.19

- Capacity:12×5ml/7ml
- Max speed:4500r/min
- Max RCF:3220×g

INH-17.5R

Tabletop High-Speed Refrigerated Centrifuge



It is widely used in clinical medicine, biochemistry, genetic engineering, immunology and other fields. It is a necessary instrument for centrifugal separation in hospitals, scientific research units and colleges and universities at all levels.

01/ Technical Performance

- 7 inch high-definition true color touch screen control, easy to operate, intuitive display, setup parameters and real-time operating parameters can be displayed on the same screen.
- Large capacity data storage and fault records and other information, can store more than 5000 historical records, convenient for users to track the operation of historical data information, data can be exported via USB.
- User can customize the naming and editing of 99 ladder centrifugation programs, each ladder centrifugation program has a total of 10 segments of centrifugation process, to meet the needs of diversified experiments.
- With program mode, curve mode, preset program call function, three-level password control function to ensure the safety and reliability of using the instrument, to facilitate the refinement of management. The system can record the speed, temperature and speed curve of the last run.
- 9 programs of speed up curve and 10 programs of speed down curve, according to the need to set the time of speed up and down, so that the centrifugal effect to achieve the best.
- Part of the rotor can realize fast rise and fall.
With rotor identification function, automatically identify 15 different rotors to prevent users from setting wrong rotor number parameters.
- Equipped with adsorption type door lock, easy to close the door cover, safe lock centrifugal. imported high-performance compressor, non-fluorine refrigerant R404A, machine standby can be delayed off the compressor refrigeration after closing the door cover can be delayed to open the compressor refrigeration, energy saving and environmental protection.
- With door cover protection, overspeed, over-temperature and other protection functions to ensure the safe operation of the instrument.
- RS232 serial port can be optional, easy to collect screen parameter information.

02 Technical Parameters

Model	INH-17.5R
Max speed	18500r/min
Max RCF	29302×g
Max capacity	4×100ml
Speed accuracy	±10r/min
Time setting	1s~99min59s/1min~99h 59min
Temperature setting	-20°C ~+40°C
Temperature accuracy	±1°C
Compressor unit	French Tecumseh Compressor Unit R404a
Noise	<65db(A)
Power supply	AC220V 50Hz 10A
Consumption	1.2kw
Dimension(LxWxH)	680mm×380mm×350mm
Packing size(LxWxH)	780mm×480mm×400mm
Net weight (No rotor)	60kg

03 Technical Rotor parameters



No.1

- Capacity:24×1.5ml/2.2ml
- Max speed:17500r/min
- Max RCF:29302×g



No.2

- Capacity:12×5ml
- Max speed:15000r/min
- Max RCF:15840×g
- Adaptor:0.5ml、1.5ml



No.3

- Capacity:12×10ml
- Max speed:13000r/min
- Max RCF:17370×g
- Adaptor:1.5ml、5ml



No.4

- Capacity:6×50ml (Round)
- Max speed:13000r/min
- Max RCF:17947×g



No.5

- Capacity:6×50ml (Conical)
- Max speed:12000r/min
- Max RCF:15292×g



No.6

- Capacity:4×100ml
- Max speed:10000r/min
- Max RCF:10744×g



No.7

- Capacity:30×1.5ml/2.2ml
- Max speed:14000r/min
- Max RCF:22140×g



No.8

- Capacity:48×1.5ml/2.2ml
- Max speed:13000r/min
- Max RCF:18525×g



No.9

- Capacity:6×8×0.2ml PCR tube
- Max speed:13000r/min
- Max RCF:16020×g



No.10

- Capacity:24 capillaries
- Max speed:13000r/min
- Max RCF:17369×g



No.11

- Capacity:24×1.5ml/2.2ml
- Max speed:13000r/min
- Max RCF:16816×g



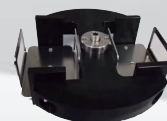
No.12

- Capacity:8×15ml
- Max speed:12000r/min
- Max RCF:13200×g



No.13

- Capacity:4×100ml
- Max speed:4500r/min
- Max RCF:3056×g



No.14

- Capacity:2×2×96holes
- Max speed:4000r/min
- Max RCF:2200×g



No.15

- Capacity:12×1.5ml/2.2ml
- Max speed:18500r/min
- Max RCF:23797×g

INTGL-17M

Tabletop High-Speed Micro-Refrigerated Centrifuge



Compact size and low noise. There are not only micro rotor but also PCR strip tube rotor. Applicable to all levels of hospitals, scientific research units, colleges and universities laboratory small amount of centrifugation.

01/ Technical Performance

- Microcomputer control, large torque motor drive, stable operation, low noise, high speed accuracy.

Large screen HD color TFT touch screen control, programmable operation, host operating

- parameters can be set according to demand and automatically stored, humanized interface, easy and convenient operation.

Real-time rpm/RCF readings between the conversion and setting, convenient and quick.

- Equipped with electronic door lock, with door cover protection, overspeed, over-temperature and other protection functions; fault automatic alarm function, safe and reliable.

With rotor automatic identification function.

- Large-capacity data storage, can store thousands of historical data, convenient for users to track the operating information, through the USB so that the historical operating records can be output and printed.

Powerful control system, can realize ten steps centrifugal, program mode, curve mode, with

- three-level password management and other functions.

With program preset call function, the user can custom edit 100 groups of programs, and each

- custom programming can be detailed information description.

Real-time display of running curve, including speed up/down curve, speed running curve, temperature curve.

- 10 programs of speed up curve / 11 programs of speed down curve, according to the need to set the time of speed up / down.

It has the function of fast rise and fall, the fastest rise is <15s and the fastest fall is <15s.

Adopting food-grade silicone rubber integral sealing ring, in line with GMP certification. The centrifuge is FDA approved.

02 Technical Parameters

Model	INTGL -17M
Max speed	17000r/min
Max RCF	21532×g
Max capacity	36×1.5ml/2.2ml
Speed accuracy	±30r/min
Time setting	1s~99min59s/1min~99h 59min
Temperature setting	-20°C ~+40°C
Temperature accuracy	±1°C
Compressor unit	French Tecumseh Compressor Unit R134a
Noise	<65db(A)
Power supply	AC220V 50Hz 10A
Consumption	1.0kw
Dimension(LxWxH)	280mm×540mm×300mm
Packing size(LxWxH)	400mm×660mm×400mm
Net weight (No rotor)	30kg

03 Technical Rotor parameters



No.1

- Capacity:12×1.5ml/2.2ml
- Max speed:17000r/min
- Max RCF:19225×g
- Adaptor:0.2ml、0.5ml



No.2

- Capacity:12×5ml
- Max speed:12000r/min
- Max RCF:10142×g
- Adaptor:0.5ml、1.5ml



No.3

- Capacity:24×1.5ml/2.2ml
- Max speed:15000r/min
- Max RCF:21532×g
- Adaptor:0.2ml、0.5ml



No.4

- Capacity:36×1.5ml/2.2ml
- Max speed:12000r/min
- Max RCF:13813×g
- Adaptor:0.2ml、0.5ml



No.5

- Capacity:48×0.5ml
- Max speed:12000r/min
- Max RCF:10920×g



No.6

- Capacity:3 PCR Line×8×0.2ml
- Max speed:15000r/min
- Max RCF:13800×g



No.7

- Capacity:18×0.5ml
- Max speed:16000r/min
- Max RCF:15300×g

INTGL-16.5M

Tabletop High-Speed Micro-Refrigerated Centrifuge



Compact size and low noise. There are not only micro rotor but also PCR strip tube rotor. Applicable to all levels of hospitals, scientific research units, colleges and universities laboratory small amount of centrifugation.

01/ Technical Performance

- Microcomputer control, large torque motor drive, stable operation, low noise, high speed accuracy.
- Touch panel, programmable operation, host running parameters can be set according to demand and automatically stored.
- Large LCD display, programmable operation, host running parameters can be set according to demand and automatically stored, humanized interface, simple and convenient operation.
- Real-time rpm/RCF reading conversion and setting, convenient and quick.
- Equipped with electronic door lock, with door cover protection, overspeed, over-temperature and other protection functions; fault automatic alarm function, safe and reliable.
- With 9 programs of speed up curve / 10 programs of speed down curve, can be set according to the need for speed up / down time
- Adopting food-grade silicone rubber integral sealing ring, in line with GMP certification. Centrifuge to obtain the U.S. FDA certification
- Optional three-axis gyro imbalance detector, with high sensitivity of imbalance detection, high detection reliability, can be adjusted according to the different centrifuge damper detection control valve, fast response speed, can be adjusted on-line valve, easy to adjust, long service life, good shock and vibration resistance and other advantages.
- It has the function of fast rising and falling, the fastest rising speed <15S, the fastest falling speed <15S.
- Data can be exported and printed through USB.

02 Technical Parameters

Model	INTGL -16.5M
Max speed	16500r/min
Max RCF	21532×g
Max capacity	36×1.5ml/2.2ml
Speed accuracy	±30r/min
Time setting	1s~99min59s/1min~99h 59min
Temperature setting	-20°C ~+40°C
Temperature accuracy	±1°C
Compressor unit	French Tecumseh Compressor Unit R134a
Noise	<65db(A)
Power supply	AC220V 50Hz 10A
Consumption	1.0kw
Dimension(LxWxH)	280mm×540mm×300mm
Packing size(LxWxH)	400mm×660mm×400mm
Net weight (No rotor)	30kg

03 Technical Rotor parameters



No.1

- Capacity:12×1.5ml/2.2ml
- Max speed:16500r/min
- Max RCF:18360×g
- Adaptor:0.2ml、0.5ml



No.2

- Capacity:12×5ml
- Max speed:12000r/min
- Max RCF:10142×g
- Adaptor:0.5ml、1.5ml



No.3

- Capacity:24×1.5ml/2.2ml
- Max speed:15000r/min
- Max RCF:21532×g
- Adaptor:0.2ml、0.5ml



No.4

- Capacity:36×1.5ml/2.2ml
- Max speed:12000r/min
- Max RCF:13813×g
- Adaptor:0.2ml、0.5ml



No.5

- Capacity:48×0.5ml
- Max speed:12000r/min
- Max RCF:10920×g



No.6

- Capacity:3 PCR Line×8×0.2ml
- Max speed:15000r/min
- Max RCF:13800×g

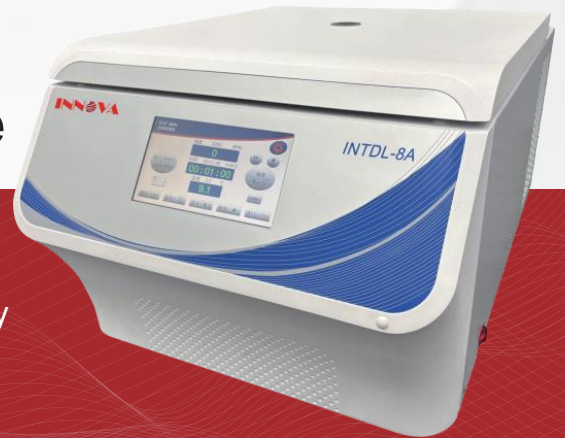


No.7

- Capacity:18×0.5ml
- Max speed:16000r/min
- Max RCF:15300×g

INTDL-8A/INTDL-5A

Tabletop Low-Speed Micro-Refrigerated Centrifuge



It is widely used in clinical medicine, biochemistry, genetic engineering, immunology and other fields. It is a necessary instrument for centrifugal separation in hospitals, scientific research units and colleges and universities at all levels.

01/ Technical Performance

- 7 inch high-definition true color touch screen control, easy to operate, intuitive display, setup parameters and real-time operating parameters can be displayed on the same screen.
- Large capacity data storage and fault records and other information, can store more than 5000 historical records, convenient for users to track the operation of historical data information, data can be exported via USB.
- User can customize the naming and editing of 99 ladder centrifugation programs, each ladder centrifugation program has a total of 10 segments of centrifugation process, to meet the needs of diversified experiments.
- With program mode, curve mode, preset program call function, three-level password control function to ensure the safety and reliability of using the instrument, to facilitate the refinement of management. The system can record the speed, temperature and speed curve of the last run.
- It has 9 programs of speed up curve and 10 programs of speed down curve, and the time of speed up and down can be set according to the need, so that the centrifugal effect can reach the best.

With rotor identification function, automatically identify the installed rotor to prevent users from

- setting the wrong rotor number parameters.
- Equipped with adsorption type door lock, easy to close the door cover, safe lock centrifugal. imported high-performance compressor, non-fluorine refrigerant R404A, machine standby can be delayed off the compressor refrigeration after closing the door cover can be delayed to open the compressor refrigeration, energy saving and environmental protection.

With door cover protection, overspeed, unbalance and other protection functions to ensure the

- safe operation of the instrument.

RS232 serial port can be optional, easy to collect screen parameter information.

02 Technical Parameters

Model	INTDL -8A	INTDL -5A
Max speed	8000r/min	5000r/min
Max RCF	9100×g	4390×g
Max capacity	4×250ml	4×18×7ml
Speed accuracy	±10r/min	
Time setting	1s~99min59s/1min~99h 59min	
Temperature setting	-20°C ~+40°C	
Temperature accuracy	±1°C	
Compressor unit	French Tecumseh Compressor Unit R404a	
Noise	<65db(A)	
Power supply	AC220V 50Hz 15A	
Consumption	1.2kw	
Dimension(LxWxH)	750mm×480mm×420mm	
Packing size(LxWxH)	800mm×580mm×490mm	
Net weight (No rotor)	80kg	

03 Technical Rotor parameters



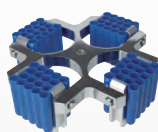
No.1

- (INTDL-5A)
- Capacity:4×100ml
- Max speed:5000r/min
- Max RCF:4390×g



No.2

- Max speed:4000r/min
- Max RCF:2810×g



No.3

- Capacity:4×18×7ml(72holes)/Hat removal (optional)
- Max speed:4000r/min
- Max RCF:3200×g



No.4

- Capacity:2×2×96holes
- Max speed:4000r/min
- Max RCF:2200×g



No.5

- Capacity:8×100ml
- Max speed:8000r/min
- Max RCF:9100×g
- Adaptor:10ml、20ml



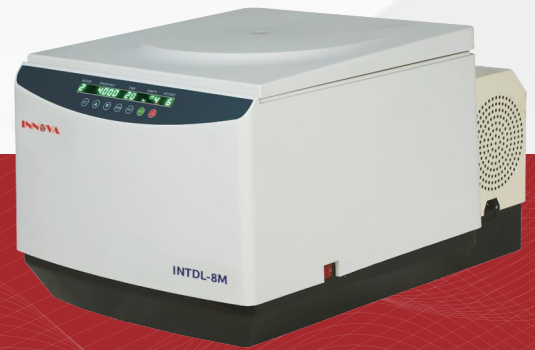
No.1

- (INTDL-8A)
- Capacity:4×250ml
- Max speed:5000r/min
- Max RCF:5030×g

INTDL-8M

Tabletop Low-Speed Micro-Refrigerated Centrifuge

It is widely used in clinical medicine, biochemistry, genetic engineering, immunology and other fields. It is a necessary instrument for centrifugal separation in hospitals, scientific research units and colleges and universities at all levels.



01/ Technical Performance

- Microcomputer control, large torque AC frequency conversion motor drive, stable operation, low noise, high speed accuracy.
- Touch panel, programmable operation, host operating parameters can be set according to demand and automatically stored.
- Digital screen display, humanized interface, simple and convenient operation.
- Real-time rpm/RCF reading conversion and setting, convenient and quick.
- Equipped with electronic door lock, with door cover protection, overspeed, over-temperature and other protection functions; fault automatic alarm function, safe and reliable.
- 9 program speed curve / 10 program speed curve, can be set according to the need to raise / lower the speed time.
- Adopting edible silicone rubber sealing ring, in line with GMP certification. The centrifuge is FDA approved.

02 Technical Parameters

Model	INTDL -8M
Max speed	8000r/min
Max RCF	9100×g
Max capacity	4×250ml
Speed accuracy	±10r/min
Time setting	1min~99min
Temperature setting	-5°C~+35°C
Temperature accuracy	±1°C
Compressor unit	French Tecumseh Compressor Unit R134a
Noise	<65db(A)
Power supply	AC220V 50Hz 15A
Consumption	1.2kw
Dimension(LxWxH)	460mm×710mm×420mm
Packing size(LxWxH)	580mm×730mm×520mm
Net weight (No rotor)	80kg

03 Technical Rotor parameters



No.1

- Capacity:4×250ml
- Max speed:4300r/min
- Max RCF:3582×g



No.2

- Max speed:4000r/min
- Max RCF:2810×g



No.3

- Capacity:4×18×5ml(72holes)
- Max speed:4000r/min
- Max RCF:2810×g
- 75mm Blood Vacuum Tube



No.4

- Capacity:4×12×5ml(72holes)
- Max speed:4000r/min
- Max RCF:2810×g
- 75mm Blood Vacuum Tube



No.5

- Capacity:8×100ml
- Max speed:8000r/min
- Max RCF:9100×g
- Adaptor:10ml、20ml

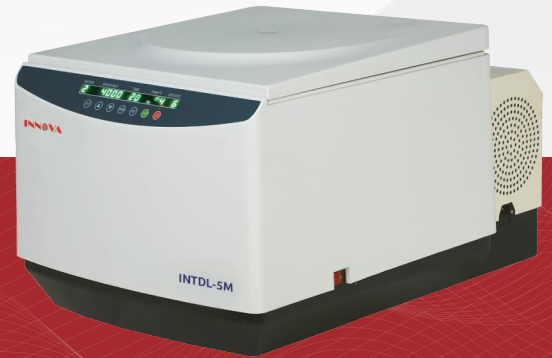


No.6

- Capacity:2×2×96holes
- Max speed:4000r/min
- Max RCF:2200×g
- thickness≤70mm

INTDL-5M

Tabletop Low-Speed Micro-Refrigerated Centrifuge



It is widely used in clinical medicine, biochemistry, genetic engineering, immunology and other fields. It is a necessary instrument for centrifugal separation in hospitals, scientific research units and colleges and universities at all levels.

01 Technical Performance

- Microcomputer control, large torque AC frequency conversion motor drive, stable operation, low noise, high speed accuracy.
- Touch panel, programmable operation, host operating parameters can be set according to demand and automatically stored.
- Digital screen display, humanized interface, simple and convenient operation.
- Real-time rpm/RCF reading conversion and setting, convenient and quick.
- Equipped with electronic door lock, with door cover protection, overspeed, over-temperature and other protection functions; fault automatic alarm function, safe and reliable.
- 9 program speed curve /10 program speed curve, can be set according to the need to raise / lower the speed time.
- Adopting food-grade silicone rubber integral sealing ring, in line with GMP certification. Centrifuge is FDA approved.
- Optional three-axis gyro imbalance detector, with high sensitivity of imbalance detection, high detection reliability, can be adjusted according to the different centrifuge damper detection control valve, fast response speed, can be adjusted on-line valve, easy to adjust, long service life, good performance of shock and vibration resistance and other advantages.

02 Technical Parameters

Model	INTDL -5M
Max speed	5000r/min
Max RCF	4390 ×g
Max capacity	4×18×7ml
Speed accuracy	±10r/min
Time setting	1min~99min
Temperature setting	-5°C ~+35 °C
Temperature accuracy	±1°C
Compressor unit	French Tecumseh Compressor Unit R134a
Noise	<65db(A)
Power supply	AC220V 50Hz 15A
Consumption	1.2kw
Dimension(LxWxH)	460mm ×710mm ×420mm
Packing size(LxWxH)	580mm ×730mm ×520mm
Net weight (No rotor)	80kg

03 Technical Rotor parameters



No.1

- Capacity:4×100ml
- Max speed:5000r/min
- Max RCF:4390×g



No.2

- Max speed:4000r/min
- Max RCF:2810×g



No.2

- Capacity:4×18×5ml(72holes)
- Max speed:4000r/min
- Max RCF:2810×g
- 75mm Blood Vacuum Tube



No.2

- Capacity:4×12×5ml(72holes)
- Max speed:4000r/min
- Max RCF:2810×g
- 75mm Blood Vacuum Tube



No.4

- Capacity:2×2×96holes
- Max speed:4000r/min
- Max RCF:2200×g

INL580R

Tabletop Low-Speed and High-Capacity Refrigerated Centrifuge



It is widely used in clinical medicine, biochemistry, genetic engineering, immunology and other fields. It is a necessary instrument for centrifugal separation in hospitals, scientific research units and colleges and universities at all levels.

01 Technical Performance

- INL580R is a multi-purpose, low-speed, large-capacity refrigerated centrifuge with international advanced technology and intelligent centrifuge.
- Microcomputer control, high-definition large screen LCD display, intuitive controls to simplify the operation, user-friendly operation touch screen interface, providing a variety of operating parameters and ideal performance of the processing status of the detailed information, simple and easy to use.
- With rotor automatic identification function.
- 9 programs of speed up curve / 10 programs of speed down curve, pm / RCF readings between the conversion and setting, convenient and quick, and synchronous display of the acceleration and speed curve images, to achieve the ideal centrifugal effect.
- A number of protection functions, such as overspeed, unbalance, over temperature, door cover, etc., ensure the safety and reliability of the instrument.
- Novel electronically controlled door lock, easy to close and safely lock the centrifuge. With user data storage function
- Large-capacity centrifugal chamber, space-saving design, a wealth of rotor specifications, to achieve a multi-purpose machine.
- Imported high-performance compressor, non-fluorine refrigerant, more environmentally friendly and energy saving. After opening the door cover and machine standby can be delayed off the compressor refrigeration, after closing the door cover can be delayed on the compressor refrigeration, energy saving and environmental protection.
- Adopting food-grade silicone rubber overall sealing ring, in line with the GMP certification, centrifuge to obtain the U.S. FDA certification.
- Optional three-axis gyro imbalance detector, with high sensitivity of imbalance detection, high detection reliability, can be adjusted according to the different centrifuges anode detection control valve, fast response speed, can be adjusted on-line valve, easy to adjust, long service life, good performance of shock and vibration resistance and other advantages.

02 Technical Parameters

Model	INL580R
Max speed	5800r/min
Max RCF	5060 ×g
Max capacity	4×750ml
Speed accuracy	± 10r/min
Time setting	1min~99h 59min
Temperature setting	-20℃ ~+40℃
Temperature accuracy	±1℃
Compressor unit	French Tecumseh Compressor Unit R404a
Noise	<65db(A)
Power supply	AC220V 50Hz 20A
Consumption	1.5kw
Dimension(LxWxH)	734mm ×620mm ×445mm
Packing size(LxWxH)	910mm ×720mm ×620mm
Net weight (No rotor)	100kg

03 Technical Rotor parameters



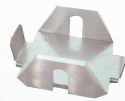
No.1

- Capacity:6×50ml
- Max speed:5800r/min
- Max RCF:5060×g
- Adaptor:15ml、20ml



No.2

- Capacity:4×2×96holes
- Max speed:4000r/min
- Max RCF:3040×g



No.3

- Capacity:2×2×96holes
- Max speed:4000r/min
- Max RCF:2200×g



No.7

- Capacity:4×500ml(Conical)
- Max speed:4000r/min
- Max RCF:3310×g



No.7

- Capacity:4×250ml(Conical)
- Max speed:4000r/min
- Max RCF:3310×g



No.2

- Capacity:4×500ml
- Max speed:4000r/min
- Max RCF:3780×g



No.4

- Capacity:4×750ml
- Max speed:4000r/min
- Max RCF:3780×g



No.5

- Capacity:6×250ml
- Max speed:4200r/min
- Max RCF:3500×g



No.6

- Capacity:4×250ml
- Max speed:4300r/min
- Max RCF:3582×g

INTG21

Tabletop High-Speed and High-Capacity Centrifuge



It is widely used in clinical medicine, biochemistry, genetic engineering, immunology and other fields. It is a necessary instrument for centrifugal separation in hospitals, scientific research units and colleges and universities at all levels.

01 Technical Performance

- HD true color touch screen control, easy to operate, intuitive display, setup parameters and real-time operating parameters can be displayed on the same screen.
- Large capacity data storage and fault records and other information, can store more than 5000 history records, convenient for users to track the operation of historical data information, data can be exported via USB.
- User can customize the naming and editing of 99 ladder centrifugation program, each ladder centrifugation program a total of 10 segments of centrifugal process to meet the diversified experimental needs.
- With program mode, curve mode, preset program call function, three-level password control function to ensure that the use of the instrument is safe and reliable, to facilitate the refinement of management. The system can record the speed, temperature and speed curve of the last run.
- It has 9 program speed-up curves and 10 program speed-down curves, and the time of speed-up and down can be set according to the need, so that the centrifugal effect can reach the best.
- With rotor recognition function, automatically recognizing different rotors to prevent users from setting wrong rotor number parameters.
- With a variety of protection functions such as door cover protection, overspeed, unbalance, etc., to ensure the safe operation of the instrument
- Adopting food-grade silicone rubber integral sealing ring, in line with GMP certification. The centrifuge obtains the U.S. FDA certification.

02 Technical Parameters

Model	INTG -21
Max speed	21000r/min
Max RCF	30642 ×g
Max capacity	4×750ml
Speed accuracy	± 10r/min
Time setting	1s~99min59s/1min~99h 59min
Noise	<65db(A)
Power supply	AC220V 50Hz 15A
Consumption	1.2kw
Dimension(LxWxH)	495mm ×620mm ×445mm
Packing size(LxWxH)	710mm ×660mm ×490mm
Net weight (No rotor)	60kg

03 Technical Rotor parameters



No.1

- Capacity:12×1.5ml/2.2ml
- Max speed:21000r/min
- Max RCF:30642×g



No.2

- Capacity:12×5ml
- Max speed:16500r/min
- Max RCF:19175×g



No.3

- Capacity:12×10ml
- Max speed:15000r/min
- Max RCF:23120×g
- Adaptor:1.5ml、 5ml



No.3

- Capacity:8×15ml
- Max speed:15000r/min
- Max RCF:23120×g
- Adaptor:1.5ml、 5ml



No.3

- Capacity:6×30ml
- Max speed:15000r/min
- Max RCF:23120×g



No.5

- Capacity:4×750ml
- Max speed:4000r/min
- Max RCF:3780×g



No.6

- Capacity:6×50ml
- Max speed:13000r/min
- Max RCF:17940×g
- Adaptor:15ml、 20ml



No.6

- Capacity:4×500ml
- Max speed:4000r/min
- Max RCF:3040×g



No.7

- Capacity:24×1.5ml/2.2ml
- Max speed:16500r/min
- Max RCF:26050×g
- Adaptor:0.2ml、 0.5ml



No.7

- Capacity:8×50ml
- Max speed:12000r/min
- Max RCF:17615×g



No.8

- Capacity:6×85ml
- Max speed:12000r/min
- Max RCF:15805×g



No.9

- Capacity:6×100ml
- Max speed:10000r/min
- Max RCF:11960×g



No.10

- Capacity:48×1.5ml/2.2ml
- Max speed:15500r/min
- Max RCF:26307×g



No.11

- Capacity:12×15ml
- Max speed:13000r/min
- Max RCF:18979×g



No.5

- Capacity:4×750ml
- Max speed:4000r/min
- Max RCF:3780×g



No.6

- Capacity:4×500ml
- Max speed:4000r/min
- Max RCF:3040×g

INTG20.5

Tabletop High-Speed and High-Capacity Centrifuge



It is widely used in clinical medicine, biochemistry, genetic engineering, immunology and other fields. It is a necessary instrument for centrifugal separation in hospitals, scientific research units and colleges and universities at all levels.

01 Technical Performance

- Microcomputer control, large torque AC frequency conversion motor drive, stable operation, low noise, speed accuracy.
- High touch panel, programmable operation, host operating parameters can be set according to demand and automatically stored.
- Large LCD display, humanized interface, simple and portable operation.
- Real-time rpm/RCF reading conversion and setting, convenient and quick.
- Equipped with electronic door lock, with door cover protection, overspeed and other protection functions; fault automatic alarm function, safe and reliable.
- 9 programs of speed up curve / 10 programs of speed down curve, can be set according to the need for speed up / down time.
- Adopting food-grade silicone rubber monolithic sealing ring, in line with GMP certification. The centrifuge obtains FDA certification.

02 Technical Parameters

Model	INTG -20.5
Max speed	20500r/min
Max RCF	29200×g
Max capacity	4×750ml
Speed accuracy	±10r/min
Time setting	1min~99min59s
Noise	<65db(A)
Power supply	AC220V 50Hz 15A
Consumption	1.2kw
Dimension(LxWxH)	495mm×620mm×445mm
Packing size(LxWxH)	710mm×660mm×490mm
Net weight (No rotor)	60kg

03 Technical Rotor parameters



No.1

- Capacity:12×1.5ml/2.2ml
- Max speed:20500r/min
- Max RCF:29200×g
- Adaptor:0.2ml、0.5ml



No.2

- Capacity:12×10ml
- Max speed:15000r/min
- Max RCF:23120×g
- Adaptor:1.5ml、5ml



No.2

- Capacity:6×30ml
- Max speed:15000r/min
- Max RCF:23120×g



No.3

- Capacity:6×50ml
- Max speed:13000r/min
- Max RCF:17940×g
- Adaptor:15ml、20ml



No.4

- Capacity:4×750ml
- Max speed:4000r/min
- Max RCF:3780×g



No.7

- Capacity:2×2×96holes
- Max speed:4000r/min
- Max RCF:2200×g



No.8

- Capacity:4×500ml
- Max speed:4000r/min
- Max RCF:3040×g



No.7

- Capacity:24×1.5ml/2.2ml
- Max speed:16500r/min
- Max RCF:24890×g
- Adaptor:0.2ml、0.5ml



No.10

- Capacity:6×85ml
- Max speed:12000r/min
- Max RCF:15805×g



No.8

- Capacity:6×100ml
- Max speed:12000r/min
- Max RCF:13000×g



No.9

- Capacity:4×250ml
- Max speed:5000r/min
- Max RCF:5030×g



No.2

- Max speed:5000r/min
- Max RCF:5030×g

INTG19

Tabletop High-Speed and High-Capacity Centrifuge



It is widely used in clinical medicine, biochemistry, genetic engineering, immunology and other fields. It is a necessary instrument for centrifugal separation in hospitals, scientific research units and colleges and universities at all levels.

01 Technical Performance

- Microcomputer control, high-definition large screen LCD, intuitive controls to simplify the operation, user-friendly operation of the touch-screen interface, to provide a variety of operating parameters and the ideal performance of the processing state of the detailed information, simple to use
- 9 programs of speed up curve / 10 programs of speed down curve, rpm / RCF readings between the conversion and setting, convenient and quick, and synchronized display of acceleration and speed curve image, to achieve the ideal centrifugal effect.
- Novel electronically controlled door lock, easy to close and safely lock the centrifuge. With overspeed, unbalance, door cover and other protection functions to ensure the safety and reliability of the instrument.
- Optional three-axis gyro imbalance detector, with high sensitivity of imbalance detection, high detection reliability, can be adjusted according to the different centrifuge damper detection control valve, fast response speed, can be adjusted on-line valve, easy to adjust, long service life, good performance of shock and vibration resistance and other advantages.
- Customized data storage, multiple data can be changed.
- With rotor automatic identification function, the use of food-grade silicone rubber integral sealing ring, in line with GMP certification. The centrifuge is FDA approved.

02 Technical Parameters

Model	INTG -19
Max speed	19000r/min
Max RCF	26307 ×g
Max capacity	4×750ml
Speed accuracy	± 10r/min
Time setting	1min~99min59s
Noise	<70db(A)
Power supply	AC220V 50Hz 18A
Consumption	1.2kw
Dimension(LxWxH)	495mm ×620mm ×445mm
Packing size(LxWxH)	710mm ×660mm ×490mm
Net weight (No rotor)	60kg

03 Technical Rotor parameters



No.1

- Capacity:12×1.5ml/2.2ml
- Max speed:19000r/min
- Max RCF:24540×g
- Adaptor:0.2ml、 0.5ml



No.2

- Capacity:12×5ml
- Max speed:16500r/min
- Max RCF:19175×g
- Adaptor:0.5ml、 1.5ml



No.3

- Capacity:6×30ml
- Max speed:15000r/min
- Max RCF:23120×g



No.3

- Capacity:12×10ml
- Max speed:15000r/min
- Max RCF:23120×g
- Adaptor:1.5ml、 5ml



No.4

- Capacity:6×50ml
- Max speed:13000r/min
- Max RCF:17940×g



No.5

- Capacity:24×1.5ml/2.2ml
- Max speed:16500r/min
- Max RCF:26050×g
- Adaptor:0.2ml、 0.5ml



No.5

- Capacity:6×85ml
- Max speed:12000r/min
- Max RCF:15805×g
- Adaptor:15ml、 20ml、 50ml



No.5

- Capacity:6×100ml
- Max speed:10000r/min
- Max RCF:11960×g
- Adaptor:10ml、 20ml



No.5

- Capacity:24×1.5ml/2.2ml
- Max speed:15500r/min
- Max RCF:26307×g
- Adaptor:0.2ml、 0.5ml



No.6

- Capacity:4×750ml
- Max speed:4000r/min
- Max RCF:3780×g



No.6

- Capacity:4×500ml
- Max speed:4000r/min
- Max RCF:3040×g

INH18.5B

Tabletop High-Speed Centrifuge

It is widely used in clinical medicine, biochemistry, genetic engineering, immunology and other fields. It is a necessary instrument for centrifugal separation in hospitals, scientific research units and colleges and universities at all levels.



01 Technical Performance

- 5-inch high-definition true color touch screen control, easy to operate, intuitive display, setup parameters and real-time operating parameters can be displayed on the same screen.
- Large capacity data storage in the fault record and other information, can store more than 5000 historical records, convenient for users to track the operation of historical data information, can be exported via USB data
- User-defined naming and editing of 99 ladder centrifugation programs, each ladder centrifugation program has a total of 10 segments centrifugation process, to meet the needs of diversified experiments.
- With program mode, curve mode, preset program call function, three-level password control function to ensure the safety and reliability of the applicable instruments, to facilitate the refinement of management. The system can record the rotational speed, temperature and speed curve of the last run.
- It has 9 programs of speed up curve and 10 programs of speed down curve, and the time of speed up and down can be set according to the need, so that the centrifugal effect can reach the best.
- Part of the rotor can realize fast rise and fall.
- With rotor identification function, 16 different rotors are automatically identified to prevent users from setting wrong rotor number parameters.
- Equipped with adsorption type door lock, easy to close the door cover and safely lock the centrifugal.
- Equipped with door cover protection, overspeed protection and other protection functions to ensure the safe operation of the instrument.

02 Technical Parameters

Model	INH18.5B
Max speed	18500r/min
Max RCF	23797 ×g
Max capacity	4×100ml
Speed accuracy	±10r/min
Time setting	1s~99min59s/1min~99h 59min
Noise	<65db(A)
Power supply	AC220V 50Hz 10A
Consumption	700w
Dimension(LxWxH)	340mm ×460mm ×330mm
Packing size(LxWxH)	440mm ×560mm ×380mm
Net weight (No rotor)	32kg

03 Technical Rotor parameters



No.1

- Capacity:12×1.5ml/2.2ml
- Max speed:18500r/min
- Max RCF:23797×g
- Adaptor:0.2ml、0.5ml



No.2

- Capacity:12×5ml
- Max speed:13000r/min
- Max RCF:11400×g
- Adaptor:0.5ml、1.5ml



No.2

- Capacity:10×5ml
- Max speed:13000r/min
- Max RCF:11400×g
- Adaptor:0.5ml、1.5ml



No.3

- Capacity:12×10ml
- Max speed:12000r/min
- Max RCF:14800×g
- Adaptor:1.5ml、5ml



No.3

- Capacity:8×15ml
- Max speed:12000r/min
- Max RCF:14800×g
- Adaptor:1.5ml、5ml



No.4

- Capacity:6×50ml
- Max speed:12000r/min
- Max RCF:13000×g
- Adaptor:15ml、20ml



No.5

- Capacity:6×50ml(Conical)
- Max speed:11000r/min
- Max RCF:13000×g
- Adaptor:15ml、20ml



No.6

- Capacity:36×1.5ml/2.2ml
- Max speed:13000r/min
- Max RCF:16211×g
- Adaptor:0.2ml、0.5ml



No.7

- Capacity:24×1.5ml/2.2ml
- Max speed:15000r/min
- Max RCF:21083×g
- Adaptor:0.2ml、0.5ml



No.8

- Capacity:36×0.5ml
- Max speed:16000r/min
- Max RCF:23669×g



No.8

- Capacity:48×0.5ml
- Max speed:16000r/min
- Max RCF:23669×g



No.9

- Capacity:48×1.5ml/2.2ml
- Max speed:13000r/min
- Max RCF:18525×g
- Adaptor:0.2ml、0.5ml



No.10

- Capacity:6 PCR tube×8×0.2ml
- Max speed:13000r/min
- Max RCF:16020×g



No.11

- Capacity:2×48holes
- Max speed:3000r/min
- Max RCF:1400×g



No.12

- Capacity:12×15ml
- Max speed:12000r/min
- Max RCF:13527×g

INH18.5/INH17.5

Tabletop High-Speed Centrifuge



It is widely used in clinical medicine, biochemistry, genetic engineering, immunology and other fields. It is a necessary instrument for centrifugal separation in hospitals, scientific research units and colleges and universities at all levels.

01 Technical Performance

- 7-inch high-definition color touch screen control, easy to operate, intuitive display, setup parameters and real-time operating parameters can be displayed on the same screen.
 - large capacity data storage and fault records and other information, convenient for users to track the operation of historical data information
 - User-defined editing 99 ladder centrifugal program, and can name each program, each program is divided into 10 centrifugal process, to meet the needs of diversified experiments
 - With program mode, curve mode, preset program call function, three-level password control function to ensure the safety and reliability of the use of the instrument, to facilitate the refinement of management
 - 9 program speed up curve and 10 program speed down curve, according to the need to set the speed up and down time, so that the centrifugal effect to achieve the best.
 - With rotor recognition function, automatically recognizing different rotors, preventing users from wrongly setting rotor number parameters.
 - Equipped with adsorption type door lock, easy to close the door cover, safe lock centrifugal. The noise of the whole machine is small, close to silent at the highest speed.
 - Equipped with door cover protection, overspeed, stainless steel pot chamber and protective sleeve and other protective functions to ensure the safe operation of the instrument.
 - Equipped with gas-tight rotor, effectively prevent aerosol pollution.
- Data can be exported and printed via USB.

02 Technical Parameters

Model	INH18.5	INH17.5
Max speed	18500r/min	17500r/min
Max RCF	29302×g	
Max capacity	4×100ml	
Speed accuracy	±10r/min	
Time setting	1s~99min59s/1min~99h 59min	
Noise	<65db(A)	
Power supply	AC220V 50Hz 10A	
Consumption	700w	
Dimension(LxWxH)	380mm×500mm×350mm	
Packing size(LxWxH)	480mm×600mm×400mm	
Net weight (No rotor)	35kg	

03 Technical Rotor parameters



No.1

- Capacity:12×1.5ml/2.2ml
- Max speed:17500r/min
- Max RCF:29302×g
- Adaptor:0.2ml、 0.5ml



No.2

- Capacity:12×5ml
- Max speed:15000r/min
- Max RCF:15840×g
- Adaptor:0.5ml、 1.5ml



No.3

- Capacity:12×10ml
- Max speed:13000r/min
- Max RCF:17370×g
- Adaptor:1.5ml、 5ml



No.4

- Capacity:6×50ml
- Max speed:13000r/min
- Max RCF:17947×g



No.5

- Capacity:6×50ml(Conical)
- Max speed:12000r/min
- Max RCF:15292×g



No.6

- Capacity:4×100ml
- Max speed:10000r/min
- Max RCF:10744×g



No.7

- Capacity:30c×1.5ml/2.2ml
- Max speed:14000r/min
- Max RCF:22140×g



No.8

- Capacity:48×1.5ml/2.2ml
- Max speed:13000r/min
- Max RCF:18525×g
- Adaptor:0.2ml、 0.5ml



No.9

- Capacity:6 PCR tube×8×0.2ml
- Max speed:13000r/min
- Max RCF:16020×g



No.10

- Capacity:24 capillary tubes
- Max speed:13000r/min
- Max RCF:17369×g



No.11

- Capacity:24×1.5ml/2.2ml
- Max speed:13000r/min
- Max RCF:16816×g
- Adaptor:0.2ml、 0.5ml



No.12

- Capacity:8×15ml
- Max speed:12000r/min
- Max RCF:13200×g



No.13

- Capacity:4×100ml
- Max speed:4500r/min
- Max RCF:3056×g



No.14

- Capacity:2×2×96holes
- Max speed:4000r/min
- Max RCF:2200×g



No.15

- Capacity:12×1.5ml/2.2ml
- Max speed:18500r/min
- Max RCF:23797×g
- Adaptor:0.2ml、 0.5ml
- Adapt INH18.5



No.16

- Capacity:12×15ml
- Max speed:12000r/min
- Max RCF:13527×g
- Adapt INH18.5



No.17

- Capacity:8×50ml
- Max speed:10000r/min
- Max RCF:12333×g
- Adaptor:1.5ml、 5ml、 10ml、 15ml、 20ml、 30ml
- Adapt INH18.5



No.18

- Capacity:8×15ml(Conical)
- Max speed:4500r/min
- Max RCF:3300×g
- Adapt INH18.5



No.19

- Capacity:12×5ml/7ml
- Max speed:4500r/min
- Max RCF:3220×g
- Adapt INH18.5

INTG 16.5

Tabletop High-Speed Centrifuge



It is widely used in clinical medicine, biochemistry, genetic engineering, immunology and other fields. It is a necessary instrument for centrifugal separation in hospitals, scientific research units and colleges and universities at all levels.

01 Technical Performance

- Microcomputer control, DC brushless motor drive, stable operation, low noise, high accuracy of rotation speed
- Touch panel, programmable operation, host operating parameters can be set according to demand and automatically stored.
- LCD screen display, humanized interface, simple and convenient operation.
- Real-time rpm/RCF reading conversion and setting, convenient and quick.
- Equipped with electronic door lock, with door cover protection, overspeed and other protection functions; fault automatic alarm function, safe and reliable.
- Adopting food-grade silicone rubber integral sealing ring, in line with GMP certification. Centrifuge to obtain the U.S. FDA certification
- 9 programs of speed up curve / 10 programs of speed down curve, can be set according to the need for speed up / down time.

02 Technical Parameters

Model	INTG16.5
Max speed	16500r/min
Max RCF	23669 ×g
Max capacity	4×100ml
Speed accuracy	±30r/min
Time setting	1s~99min59s
Noise	<65db(A)
Power supply	AC220V 50Hz 10A
Consumption	750w
Dimension(LxWxH)	330mm ×420mm ×280mm
Packing size(LxWxH)	430mm ×520mm ×390mm
Net weight (No rotor)	20kg

03 Technical Rotor parameters



No.1

- Capacity:12×1.5ml/2.2ml
- Max speed:16500r/min
- Max RCF:18930×g
- Adaptor:0.2ml、0.5ml



No.2

- Capacity:10×5ml
- Max speed:13000r/min
- Max RCF:11400×g
- Adaptor:0.5ml、1.5ml



No.2

- Capacity:12×5ml
- Max speed:13000r/min
- Max RCF:11400×g
- Adaptor:0.5ml、1.5ml



No.3

- Capacity:12×10ml
- Max speed:12000r/min
- Max RCF:14800×g
- Adaptor:1.5ml、5ml



No.3

- Capacity:8×15ml(Conical)
- Max speed:12000r/min
- Max RCF:14800×g
- Adaptor:1.5ml、5ml



No.4

- Capacity:6×50ml
- Max speed:11000r/min
- Max RCF:13000×g
- Adaptor:15ml、20ml



No.5

- Capacity:4×100ml
- Max speed:10000r/min
- Max RCF:11570×g
- Adaptor:10ml、20ml



No.9

- Capacity:2×48holes
- Max speed:3000r/min
- Max RCF:1400×g



No.11

- Capacity:24×1.5ml/2.2ml
- Max speed:13000r/min
- Max RCF:16816×g



No.10

- Capacity:36×0.5ml
- Max speed:16000r/min
- Max RCF:23669×g



No.8

- Capacity:48×0.5ml
- Max speed:16000r/min
- Max RCF:23669×g



No.9

- Capacity:3 PCR Line×8×0.2ml
- Max speed:12000r/min
- Max RCF:15696×g



No.10

- Capacity:48×1.5ml/2.2ml
- Max speed:12000r/min
- Max RCF:15696×g
- Adaptor:0.2ml、0.5ml



No.11

- Capacity:4×10ml
- Max speed:6000r/min
- Max RCF:3200×g

INTG 16

Tabletop High-Speed Centrifuge

It is widely used in clinical medicine, biochemistry, genetic engineering, immunology and other fields. It is a necessary instrument for centrifugal separation in hospitals, scientific research units and colleges and universities at all levels.



01 Technical Performance

- Microcomputer control, DC brushless motor drive, stable operation, low noise, high speed accuracy.
- Touch panel, programmable operation, host operating parameters can be set according to demand and automatically stored.
- LCD display, humanized interface, easy and convenient operation.
- Real-time rpmV/RCF readings conversion and setting, convenient and quick.
- Equipped with electronic door lock, with door cover protection, overspeed and other protection functions; fault automatic alarm function, safe and reliable.
- Adopting food-grade silicone rubber integral sealing ring, in line with GMP certification. Centrifuge to obtain the U.S. FDA certification
- 9 program speed curve / 10 program speed curve, according to the need to set up / down time
- Optional three-axis gyro imbalance detector, with high sensitivity of imbalance detection, high detection reliability, can be adjusted according to the different centrifuge damper detection control valve, fast response speed, can be adjusted on-line valve, easy to adjust, long service life, good performance of shock and vibration resistance and other advantages.

02 Technical Parameters

Model	INTG16
Max speed	16000r/min
Max RCF	23669 ×g
Max capacity	6×50ml
Speed accuracy	±30r/min
Time setting	1s~99min59s
Noise	<65db(A)
Power supply	AC220V 50Hz 5A
Consumption	750w
Dimension(LxWxH)	330mm ×420mm ×280mm
Packing size(LxWxH)	430mm ×520mm ×390mm
Net weight (No rotor)	20kg

03 Technical Rotor parameters



No.1

- Capacity:12×1.5ml/2.2ml
- Max speed:16000r/min
- Max RCF:17800×g
- Adaptor:0.2ml、0.5ml



No.2

- Capacity:24×1.5ml/2.2ml
- Max speed:13200r/min
- Max RCF:16110×g
- Adaptor:0.2ml、0.5ml



No.3

- Capacity:10×5ml
- Max speed:13000r/min
- Max RCF:11400×g
- Adaptor:0.5ml、1.5ml



No.3

- Capacity:12×5ml
- Max speed:13000r/min
- Max RCF:11400×g
- Adaptor:0.5ml、1.5ml



No.4

- Capacity:12×10ml
- Max speed:12000r/min
- Max RCF:14800×g
- Adaptor:1.5ml、5ml



No.5

- Capacity:8×15ml(Conical)
- Max speed:12000r/min
- Max RCF:14800×g
- Adaptor:1.5ml、5ml



No.5

- Capacity:36×0.5ml
- Max speed:16000r/min
- Max RCF:23669×g



No.5

- Capacity:48×0.5ml
- Max speed:16000r/min
- Max RCF:23669×g



No.6

- Capacity:6×50ml
- Max speed:11000r/min
- Max RCF:13000×g
- Adaptor:15ml、20ml



No.7

- Capacity:36×1.5ml/2.2ml
- Max speed:12000r/min
- Max RCF:13845×g
- Adaptor:0.2ml、0.5ml

INTG 16A

Tabletop High-Speed Centrifuge



Compact size and low noise. It is the first choice instrument for small amount of centrifugal separation in all levels of hospitals, scientific research units, institutions of higher learning.

01/ Technical Performacne

- Microcomputer control, DC brushless motor drive, stable operation, low noise, high speed accuracy.
- Touch panel, programmable operation, host operating parameters can be set according to demand and automatically stored.
- Digital screen display, humanized interface, simple and convenient operation.
- Real-time rpm/RCF reading conversion and setting, convenient and quick.
- Equipped with electronic door lock, with door cover protection, overspeed and other protection functions; fault automatic alarm function, safe and reliable.
- Adopting food-grade silicone rubber integral sealing ring, in line with GMP certification. The centrifuge is FDA certified.

02/ Technical Parameters

Model	INTG16A
Max speed	16000r/min
Max RCF	17800 ×g
Max capacity	10 ×5ml
Speed accuracy	±30r/min
Time setting	1min~99min
Noise	<65db(A)
Power supply	AC220V 50Hz 5A
Consumption	250w
Dimension(LxWxH)	230mm ×310mm ×240mm
Packing size(LxWxH)	290mm ×400mm ×330mm
Net weight (No rotor)	9kg

03 Technical Rotor parameters



No.1

- Capacity:12×1.5ml/2.2ml
- Max speed:16000r/min
- Max RCF:17800×g
- Adaptor:0.2ml、0.5ml



No.2

- Capacity:10×5ml
- Max speed:13000r/min
- Max RCF:11400×g
- Adaptor:0.5ml、1.5ml



No.3

- Capacity:18×1.5ml/2.2ml
- Max speed:13200r/min
- Max RCF:16110×g
- Adaptor:0.2ml、0.5ml

INH14.5M

Micro Centrifuge

Widely used in life science, medical and chemical laboratories, suitable for centrifugation experiments in 1.5ml/2.2ml centrifuge tubes and 0.2ml octuplex tubes.



01 Technical Performance

- Beautiful modeling, compact size, easy to operate, fast lifting speed, quiet operation, low noise.
- Liquid crystal display, optional matching angle rotor and octuple tube rotor.
- Brushless maintenance-free high-speed motor unique airflow guidance to maintain the sample temperature.
- Slow temperature rise, the highest speed running 30min temperature rise does not exceed 10 °C. Sensitive and efficient speed control, accelerate to the highest speed only 12s, deceleration time from the highest speed is only 12s.
- The key layout is simple and clear, the function is intuitive, easy to operate, convenient instant centrifugation, safe and worry-free.
- The rotor can be disassembled with bare hands without tools, convenient for quick descent.
- Aluminum alloy corner rotor adopts airtight sealing structure, durable and can be sterilized by high temperature and high pressure, preventing aerosol pollution and better biological safety.
- Multiple safety protection functions, in line with CE safety standards, safe and reliable.

02 Technical Parameters

Model	INH14.5M
Max speed	14500r/min
Max RCF	14000×g
Max capacity	12×1.5ml/2.2ml
Speed accuracy	±30r/min
Time setting	20s~99min
Noise	<50db(A)
Power supply	AC220V 50Hz 5A
Consumption	100w
Dimension(LxWxH)	230mm×270mm×155mm
Packing size(LxWxH)	285mm×410mm×220mm
Net weight (No rotor)	4.8kg

03 Technical Rotor parameters



No.1

- Capacity: 12×1.5ml/2.2ml
- Max speed: 14500r/min
- Max RCF: 14000×g
- Adaptor: 0.2ml、0.5ml



No.2

- Capacity: 4×8×0.2ml
- Max speed: 6000r/min
- Max RCF: 2140×g

INTD6

Tabletop Low-Speed and High-Capacity Centrifuge



It is widely used in clinical medicine, biochemistry, genetic engineering, immunology and other fields. It is a necessary instrument for centrifugal separation in hospitals, scientific research units and colleges and universities at all levels.

01 Technical Performance

- Microcomputer control, high-definition large screen LCD, intuitive controls to simplify the operation, user-friendly operation of the touch-screen interface to provide a variety of operating parameters and ideal performance to deal with the status of the detailed information, easy to use.
- With rotor automatic identification function, the use of food-grade silicone rubber integral sealing ring, in line with GMP certification. Centrifuge is FDA approved.
- 9 programs of speed up curve / 10 programs of speed down curve, rpm / RCF readings between the conversion and setting, convenient and quick, and synchronized display of acceleration and speed curve image, to achieve the ideal centrifugal effect.
- Over-speed, unbalance, door cover and other protection functions to ensure the safety and reliability of the instrument.
- Novel electronically controlled door lock, easy to close and lock the centrifuge safely.
- Large-capacity centrifugal chamber, space-saving design, a wealth of rotor specifications, to achieve a multi-purpose machine.
- Optional three-axis gyro imbalance detector, with high sensitivity of imbalance detection, high reliability of detection, according to different centrifuge dampers to adjust the detection control valve, fast response speed, online adjustment of the valve, easy to adjust, long service life, good performance of shock and vibration resistance and other advantages.

02 Technical Parameters

Model	INTD6
Max speed	6000r/min
Max RCF	5420 ×g
Max capacity	4×750ml
Speed accuracy	± 10r/min
Time setting	1min~99h59min
Noise	<65db(A)
Power supply	AC220V 50Hz 15A
Consumption	1kw
Dimension(LxWxH)	495mm ×620mm ×445mm
Packing size(LxWxH)	710mm ×660mm ×490mm
Net weight (No rotor)	60kg

03 Technical Rotor parameters



No.1

- Capacity:6×50ml (Conical)
- Max speed:6000r/min
- Max RCF:5420×g



No.3

- Capacity:2×2×96holes
- Max speed:4000r/min
- Max RCF:2200×g



No.4

- Capacity:4×750ml
- Max speed:4000r/min
- Max RCF:3780×g



No.2

- Capacity:4×500ml
- Max speed:4000r/min
- Max RCF:3040×g



No.5

- Capacity:6×250ml
- Max speed:4200r/min
- Max RCF:3500×g



No.6

- Capacity:4×250ml
- Max speed:4300r/min
- Max RCF:3582×g

INL580

Tabletop Low-Speed and High-Capacity Centrifuge



It is widely used in clinical medicine, biochemistry, genetic engineering, immunology and other fields. It is a necessary instrument for centrifugal separation in hospitals, scientific research units and colleges and universities at all levels.

01 Technical Performance

- INL580 is a multi-purpose, low-speed, large-capacity centrifuge with international advanced technology and intelligent centrifuge.
- Microcomputer control, high-definition large screen LCD, intuitive controls to simplify the operation, user-friendly interface, providing a variety of operating parameters and ideal performance of the processing status of the detailed information, easy to use.
- 9 programs of speed up curve/10 programs of speed down curve, mm/RCF readings between the conversion and setting, convenient and quick, and synchronous display of the acceleration and speed curve image, to achieve the ideal centrifugal results
- Over-speed, unbalance, door cover and other protection functions to ensure the safety and reliability of the instrument.
- Novel electronically controlled door lock, easy to close and safely lock the centrifuge.
- Large-capacity centrifugal chamber, space-saving design, a wealth of rotor specifications, to achieve a multi-purpose machine.
- Adoption of food-grade silicone rubber seals, in line with the GMP certification. 8. The centrifuge obtains the U.S. FDA certification
- Optional three-axis gyro imbalance detector, with high sensitivity of imbalance detection, high detection reliability, can be adjusted according to the different centrifuge damper detection control valve, fast response speed, can be adjusted on-line valve, easy to adjust, long service life, good performance of shock and vibration resistance, and other advantages.

02 Technical Parameters

Model	INL580
Max speed	5800r/min
Max RCF	5060 ×g
Max capacity	4×750ml
Speed accuracy	± 10r/min
Time setting	1min~99min59s
Noise	<65db(A)
Power supply	AC220V 50Hz 15A
Consumption	750w
Dimension(LxWxH)	495mm ×620mm ×445mm
Packing size(LxWxH)	710mm ×660mm ×490mm
Net weight (No rotor)	60kg

03 Technical Rotor parameters



No.1

- Capacity:6×50ml (Conical)
- Max speed:5800r/min
- Max RCF:5060×g



No.3

- Capacity:2×2×96holes
- Max speed:4000r/min
- Max RCF:2200×g



No.4

- Capacity:4×750ml
- Max speed:4000r/min
- Max RCF:3780×g



No.2

- Capacity:4×500ml
- Max speed:4000r/min
- Max RCF:3040×g



No.5

- Capacity:6×250ml
- Max speed:4200r/min
- Max RCF:3500×g



No.6

- Capacity:4×250ml
- Max speed:4300r/min
- Max RCF:3582×g

INTD5.5

Multi-tube Rack Automatic Balancing Centrifuge



It is widely used in clinical medicine, biochemistry, genetic engineering, immunology and other fields. It is a necessary instrument for centrifugal separation in hospitals, scientific research units and colleges and universities at all levels.

01/ Technical Performacne

- Microcomputer control, large torque AC frequency conversion motor drive, stable operation, low noise, high speed accuracy.
- Touch panel, programmable operation, host operating parameters can be set according to demand and automatically stored.
- Large LCD display, humanized interface, easy and convenient operation.
- Real-time rpm/RCF readings between the conversion and setting, convenient and fast.
- Equipped with electronic door lock, with door cover protection, overspeed and other protection functions; fault automatic alarm function, safe and reliable.
- Adopting food-grade silicone rubber integral sealing ring, in line with GMP certification. The centrifuge is FDA certified.
- 9 programs of speed up curve / 10 programs of speed down curve, can be set according to the need for speed up / down time

02/ Technical Parameters

Model	INTD5.5
Max speed	5500r/min
Max RCF	5310 ×g
Max capacity	4×500ml
Speed accuracy	± 10r/min
Time setting	1s~99min59s
Noise	<65db(A)
Power supply	AC220V 50Hz 20A
Consumption	750w
Dimension(LxWxH)	460mm ×540mm ×340mm
Packing size(LxWxH)	550mm ×630mm ×430mm
Net weight (No rotor)	31kg

03 Technical Rotor parameters



No.1

- Capacity:12×15ml
- Max speed:5500r/min
- Max RCF:5310×g



No.3

- Capacity:2×2×96holes
- Max speed:4000r/min
- Max RCF:2200×g



No.4

- Capacity:4×100ml
- Max speed:5000r/min
- Max RCF:4390×g



No.2

- Capacity:4×500ml
- Max speed:4000r/min
- Max RCF:3040×g



No.5

- Max speed:4200r/min
- Max RCF:3100×g



No.6

- Capacity:4×500ml(Conical)
- Max speed:4000r/min
- Max RCF:3310×g



No.6

- Capacity:4×250ml(Conical)
- Max speed:4000r/min
- Max RCF:3310×g

INTD5Z

Multi-tube Rack Automatic Balancing Centrifuge



It is widely used in clinical medicine, biochemistry, genetic engineering, immunology and other fields. It is a necessary instrument for centrifugal separation in hospitals, scientific research units and colleges and universities at all levels.

01 Technical Performance

- Microcomputer control, large torque AC frequency conversion motor drive, stable operation, low noise, high speed accuracy.
- Touch panel, programmable and storing user's common program, convenient for users to call at any time.
- Large LCD screen, humanized interface, easy and convenient operation.
- Real-time RPM/RCF reading conversion and setting, convenient and fast.
- Unique air inlet and exhaust system ensures the temperature rise of specimen and low noise of the whole machine.
- Equipped with electronic feedback door lock to realize automatic door opening, safe and reliable.
- With multiple protection and self-diagnosis functions such as unbalance, overspeed, door lock, over-current, over-voltage and so on.
- Adopting international advanced foam sealing ring, better sealing and sound insulation effect.
- The centrifuge obtains the U.S. FDA certification.
- Optional three-axis gyro imbalance detector, with high sensitivity of imbalance detection, high detection reliability, can be adjusted according to the different centrifuge damper detection control valve, fast response speed, can be adjusted on-line valve, easy to adjust, long service life, good shock and vibration resistance and other advantages.

02 Technical Parameters

Model	INTD5Z
Max speed	5000r/min
Max RCF	5030 ×g
Max capacity	4×500ml
Speed accuracy	± 10r/min
Time setting	1min~99min59s
Noise	<65db(A)
Power supply	AC220V 50Hz 10A
Consumption	750w
Dimension(LxWxH)	465mm ×560mm ×380mm
Packing size(LxWxH)	560mm ×650mm ×470mm
Net weight (No rotor)	51kg

03 Technical Rotor parameters



No.1

- Capacity:4×500ml
- Max speed:4000r/min
- Max RCF:3040×g



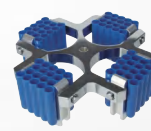
No.2

- Capacity:8×50ml
- Max speed:5000r/min
- Max RCF:5030×g



No.3

- Max speed:4000r/min
- Max RCF:3200×g



No.3

- Capacity:4×18×7ml(72holes)/Hat removal (optional)
- Max speed:4000r/min
- Max RCF:3200×g



No.4

- Capacity:2×2×96holes
- Max speed:4000r/min
- Max RCF:2200×g



No.3

- Max speed:4000r/min
- Max RCF:3200×g



No.5

- Capacity:4×500ml(Conical)
- Max speed:4000r/min
- Max RCF:3310×g



No.5

- Capacity:4×250ml(Conical)
- Max speed:4000r/min
- Max RCF:3310×g

INDL-5T/INTDL-5T/INTDL-4T

Automatic Decapitation Refrigerated Centrifuge



At present, when collecting blood samples in hospitals at all levels, vacuum blood collection tubes are commonly used, and it is inefficient to manually remove the cap of the tube after completing blood centrifugation by centrifuge; at the same time, the vibration generated when removing the tube may lead to remixing of the blood and increase the risk of germs infection. The automatic decapitation freezing centrifuge developed by our company has remarkable decapitation effect, which completely solves the problem of difficult decapitation of vacuum blood collection tubes in all levels of hospitals, and it is a necessary instrument for blood centrifugation in all levels of hospitals.

01 Technical Performance

- Vacuum blood collection tubes are automatically decapitated, the success rate of decapitation >90%.
- Suitable for vacuum blood collection tubes with diameter 13mm, length 75 and 100mm;
- Large LCD display, humanized interface, simple and convenient operation.
- Real-time rpm/RCF readings between the conversion and setting, convenient and quick.
- Electronic door lock, safe and reliable.
- Adopt special shock absorbing structure, good shock absorbing effect, and automatic balance function.
- It is equipped with various protection functions such as unbalance, overspeed and door cover protection.
- Adopting food-grade silicone rubber integral sealing ring, in line with GMP certification. The centrifuge is FDA certified.

02 Technical Parameters

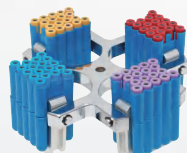
Model	INDL -5T	INTDL -5T	INTDL -4T
Type	Floor -standing	Tabletop	Tabletop
Max speed	4000r/min	4000r/min	4300r/min
Max RCF	3780 ×g	3030 ×g	3582 ×g
Number of tube	128(32 ×4)	84/100	48/72
Speed accuracy	±10r/min	±10r/min	±10r/min
Time setting	1s~99h 59min59s	1s~99h 59min59s	1s~99h 59min59s
Temperature setting	-20℃ ~+40℃	-20℃ ~+40℃	-20℃ ~+40℃
Temperature accuracy	±1℃	±1℃	±1℃
Compressor unit	French Tecumseh Compressor Unit R404a	French Tecumseh Compressor Unit R404a	French Tecumseh Compressor Unit R404a
Noise	<65db(A)	<65db(A)	<65db(A)
Power supply	AC220V 50Hz 20A	AC220V 50Hz 15A	AC220V 50Hz 15A
Consumption	2kw	1.5kw	1.5kw
Dimension(LxWxH)	650mm ×710mm ×1100mm	734mm ×620mm ×445mm	734mm ×620mm ×445mm
Packing size(LxWxH)	740mm ×830mm ×1100mm	910mm ×720mm ×620mm	910mm ×720mm ×620mm
Net weight (No rotor)	140kg	100kg	100kg

03 Technical Rotor parameters



No.1

- Capacity:128×7ml
- Max speed:4000r/min
- Max RCF:3780×g



No.2

- Capacity:72×7ml
- Max speed:4000r/min
- Max RCF:3200×g

IND5T/INTD5T/INTD4T

Automatic Decapitation Refrigerated Centrifuge



At present, when collecting blood samples in hospitals at all levels, vacuum blood collection tubes are commonly used, and it is inefficient to manually remove the cap of the tube after completing blood centrifugation by centrifuge; at the same time, the vibration generated when removing the tube may lead to remixing of the blood and increase the risk of germs infection. The automatic decapitation freezing centrifuge developed by our company has remarkable decapitation effect, which completely solves the problem of difficult decapitation of vacuum blood collection tubes in all levels of hospitals, and it is a necessary instrument for blood centrifugation in all levels of hospitals.

01/ Technical Performance

- Vacuum blood collection tubes are automatically decapitated, the success rate of decapitation >90%.
- Suitable for vacuum blood collection tubes with diameter 13mm, length 75 and 100mm;
- Large LCD display, humanized interface, simple and convenient operation.
- Real-time rpm/RCF readings between the conversion and setting, convenient and quick.
- Electronic door lock, safe and reliable.
- Adopt special shock absorbing structure, good shock absorbing effect, and automatic balance function.
- It is equipped with various protection functions such as unbalance, overspeed and door cover protection.
- Adopting food-grade silicone rubber integral sealing ring, in line with GMP certification. The centrifuge is FDA certified.

02 Technical Parameters

Model	IND5T	INTD5T	INTD4T
Type	Floor -standing	Tabletop	Tabletop
Max speed	4000r/min	4000r/min	4000r/min
Max RCF	3780 ×g	3030 ×g	3200 ×g
Number of tube	128(32 ×4)	84/100	36/48/72
Speed accuracy	± 10r/min	± 10r/min	± 10r/min
Time setting	1s~99h 59min59s	1min~99min 59s	1s~59min59s
Noise	<65db(A)	<65db(A)	<65db(A)
Power supply	AC220V 50Hz 20A	AC220V 50Hz 15A	AC220V 50Hz 10A
Consumption	1.5kw	1kw	750w
Dimension(LxWxH)	650mm ×710mm ×1100mm	495mm ×620mm ×445mm	465mm ×560mm ×380mm
Packing size(LxWxH)	740mm ×830mm ×1100mm	710mm ×660mm ×490mm	560mm ×650mm ×470mm
Net weight (No rotor)	140kg	60kg	51kg

03 Technical Rotor parameters



No.1

- Capacity:128×7ml
- Max speed:4000r/min
- Max RCF:3780×g



No.2

- Capacity:72×7ml
- Max speed:4000r/min
- Max RCF:3200×g

INTD6B

Tabletop Low-speed Automatic Balancing Centrifuge

Widely used in clinical medicine, biochemistry, genetic engineering, immunology and other fields, a new generation of products designed to meet the new requirements of clinical medicine and other centrifuges.



01 Technical Performance

- Microcomputer control, DC brushless motor drive, stable operation, low noise, high speed accuracy.
- Touch panel, programmable operation, host operating parameters can be set according to demand and automatically stored.
- LCD screen display, humanized interface, simple and convenient operation.
- Real-time rpm/RCF reading conversion and setting, convenient and quick.
- Equipped with electronic door lock, with door cover protection, overspeed and other protection functions; fault automatic alarm function, safe and reliable.
- Novel and unique stainless steel rotor, a variety of stainless steel tube frame, easy to replace.
- Adopting food-grade silicone rubber sealing ring, in line with GMP certification. Centrifuge to obtain U.S. FDA certification
- Optional three-axis gyro imbalance detector, with high sensitivity of imbalance detection, high detection reliability, according to different centrifuge damper adjustment detection control valve, fast response speed, online adjustment valve, convenient adjustment, long service life, good shock and vibration resistance.

02 Technical Parameters

Model	INTD6B
Max speed	6000r/min
Max RCF	5120 ×g
Max capacity	16 × 15ml
Speed accuracy	± 30r/min
Time setting	1s~99min59s/1min~99h 59min
Noise	<65db(A)
Power supply	AC220V 50Hz 10A
Consumption	300w
Dimension(LxWxH)	410mm × 490mm × 310mm
Packing size(LxWxH)	500mm × 580mm × 400mm
Net weight (No rotor)	22kg

03 Technical Rotor parameters



No.1

- Capacity:12×15ml
- Max speed:6000r/min
- Max RCF:5120×g



No.2

- Max speed:4200r/min
- Max RCF:2760×g



No.2

- Capacity:16×15ml
- Max speed:4200r/min
- Max RCF:2760×g



No.2

- Capacity:4×50ml
- Max speed:4200r/min
- Max RCF:2760×g

INTD5B

Tabletop Low-speed Automatic Balancing Centrifuge



Widely used in clinical medicine, biochemistry, genetic engineering, immunology and other fields, a new generation of products designed to meet the new requirements of clinical medicine and other centrifuges.

01 Technical Performance

- Microcomputer control, DC brushless motor drive, stable operation, low noise, high speed accuracy.
- Touch panel, programmable operation, host operating parameters can be set according to demand and automatically stored.
- LCD screen display, humanized interface, easy and convenient operation.
- Real-time rpm/RCF reading conversion and setting, convenient and quick.
- Equipped with electronic door lock, with door cover protection, overspeed and other protection functions; fault automatic alarm function, safe and reliable.
- Novel and unique stainless steel rotor, a variety of stainless steel tube frame, easy to replace.
- Adopting food-grade silicone rubber sealing ring, in line with GMP certification. Centrifuge to obtain U.S. FDA certification
- Optional three-axis gyro imbalance detector, with high sensitivity of imbalance detection, high detection reliability, according to different centrifuge damper adjustment detection control valve, fast response speed, online adjustment valve, convenient adjustment, long service life, good shock and vibration resistance.

02 Technical Parameters

Model	INTD5B
Max speed	5000r/min
Max RCF	4100 ×g
Max capacity	16 × 15ml
Speed accuracy	±30r/min
Time setting	1s~99min59s/1min~99h 59min
Noise	<65db(A)
Power supply	AC220V 50Hz 10A
Consumption	250w
Dimension(LxWxH)	410mm ×490mm ×310mm
Packing size(LxWxH)	500mm ×580mm ×400mm
Net weight (No rotor)	22kg

03 Technical Rotor parameters



No.1

- Capacity: 24×10ml
- Max speed: 5000r/min
- Max RCF: 4100×g



No.2

- Max speed: 4200r/min
- Max RCF: 2760×g



No.2

- Capacity: 16×15ml
- Max speed: 4200r/min
- Max RCF: 2760×g



No.2

- Capacity: 4×50ml
- Max speed: 4200r/min
- Max RCF: 2760×g

INTD4B

Tabletop Low-speed Automatic Balancing Centrifuge



Widely used in clinical medicine, biochemistry, genetic engineering, immunology and other fields, a new generation of products designed to meet the new requirements of clinical medicine and other centrifuges.

01 Technical Performacne

- Microcomputer control, DC brushless motor drive, stable operation, low noise, high accuracy of rotation speed
- Touch panel, programmable operation, host operating parameters can be set according to demand and automatically stored.
- LCD screen display, humanized interface, easy and convenient operation.
- Real-time rpm/RCF reading conversion and setting, convenient and quick.
- Equipped with electronic door lock, with door cover protection, overspeed and other protection functions; fault automatic alarm function, safe and reliable.
- Novel and unique stainless steel rotor, a variety of stainless steel tube frame, easy to replace.
- Adopting food-grade silicone rubber sealing ring, in line with GMP certification. The centrifuge is FDA approved.

02 Technical Parameters

Model	INTD4B
Max speed	4200r/min
Max RCF	2760 ×g
Max capacity	12×20ml
Speed accuracy	± 30r/min
Time setting	1s~99min59s/1min~99h 59min
Noise	<65db(A)
Power supply	AC220V 50Hz 5A
Consumption	150w
Dimension(LxWxH)	410mm ×490mm ×310mm
Packing size(LxWxH)	500mm ×580mm ×400mm
Net weight (No rotor)	22kg

03 Technical Rotor parameters



No.1

- Capacity:18×10ml
- Max speed:4000r/min
- Max RCF:2220×g



No.1

- Capacity:12×20ml
- Max speed:4000r/min
- Max RCF:2220×g



No.2

- Max speed:4200r/min
- Max RCF:2760×g



No.2

- Capacity:4×50ml
- Max speed:4200r/min
- Max RCF:2760×g

INTD4

Tabletop Low-speed Automatic Balancing Centrifuge



Widely used in clinical medicine, biochemistry, genetic engineering, immunology and other fields, a new generation of products designed to meet the new requirements of clinical medicine and other centrifuges.

01 Technical Performance

- Microcomputer control, DC brushless motor drive, stable operation, low noise, high speed accuracy.

Touch panel, programmable operation, host operating parameters can be set according to

- demand and automatically stored.
- LCD screen display, humanized interface, simple and convenient operation.
- Real-time rpm/RCF reading conversion and setting, convenient and quick.
- Equipped with electronic door lock, with door cover protection, overspeed and other protection functions; fault automatic alarm function, safe and reliable.

- Adopting food-grade silicone rubber integral sealing ring, in line with GMP certification. Centrifuge to obtain U.S. FDA certification

Optional three-axis gyro imbalance detector, with high sensitivity of imbalance detection, high detection reliability, according to different centrifuge damper adjustment detection control valve, fast response speed, online adjustment valve, easy to adjust, long service life, good performance of shock and vibration resistance, and so on.

02 Technical Parameters

Model	INTD4
Max speed	4000r/min
Max RCF	2500 ×g
Max capacity	6×50ml
Speed accuracy	±30r/min
Time setting	1s~99min59s/1min~99h 59min
Noise	<65db(A)
Power supply	AC220V 50Hz 5A
Consumption	150w
Dimension(LxWxH)	330mm ×420mm ×280mm
Packing size(LxWxH)	430mm ×520mm ×390mm
Net weight (No rotor)	14kg

03 Technical Rotor parameters



No.1

- Capacity:12×7ml
- Max speed:4000r/min
- Max RCF:2220×g
- Adapt for 5ml/7ml(Blood Vaccum Tube)



No.1

- Capacity:18×7ml
- Max speed:4000r/min
- Max RCF:2220×g
- Adapt for 5ml/7ml(Blood Vaccum Tube)



No.1

- Capacity:24×7ml
- Max speed:4000r/min
- Max RCF:2220×g
- Adapt for 5ml/7ml(Blood Vaccum Tube)



No.1

- Capacity:12×10ml/15ml
- Max speed:4000r/min
- Max RCF:2220×g
- Adaptor:1.5ml、 5ml、 5ml/7ml(Blood Vaccum Tube)



No.1

- Capacity:18/24×10ml
- Max speed:4000r/min
- Max RCF:2220×g
- Adaptor:1.5ml、 5ml、 5ml/7ml(Blood Vaccum Tube)



No.1

- Capacity:12×20ml
- Max speed:4000r/min
- Max RCF:2220×g
- Adaptor:5ml、 10ml、 5ml/7ml(Blood Vaccum Tube)



No.1

- Capacity:4×50ml
- Max speed:4000r/min
- Max RCF:2220×g
- Adaptor:15ml、 20ml、 5ml/7ml(Blood Vaccum Tube)



No.1

- Capacity:6×50ml
- Max speed:4000r/min
- Max RCF:2220×g
- Adaptor:15ml、 20ml、 5ml/7ml(Blood Vaccum Tube)



No.2

- Capacity:8×15ml
- Max speed:4000r/min
- Max RCF:2361×g
- Adaptor:1.5ml、 5ml、 10ml、 5ml/7ml(Blood Vaccum Tube)



No.3

- Capacity:4×50ml(Round)
- Max speed:4000r/min
- Max RCF:2500×g

INTD5P

PRP Centrifuge for Cosmetology



The centrifuge for cosmetic injection and transplantation is a special model designed for PRP injection and transplantation with the introduction of foreign advanced technology by our company. It is mainly used in the field of cosmetic surgery and dermatology.

01/ Technical Performacne

- Microcomputer control, DC brushless motor drive, stable operation, low noise, high precision of rotational speed and centrifugal force.
- LCD screen display, humanized interface, simple and convenient operation.
- Equipped with special rotor, suitable for a variety of PRP tube separation and extraction, special machine, good results.
- Special program for PRP tubes.
- Real-time rpm/RCF reading conversion and setting, convenient and quick.
- Equipped with electronic door lock, with door cover protection, overspeed and other protection functions; fault automatic alarm function, safe and reliable.
Automatic fault alarm function, safe and reliable.
- Adopting food-grade silicone rubber overall sealing ring, in line with GMP certification. The centrifuge has obtained FDA certification.

02/ Technical Parameters

Model	INTD5P(Specialized for cosmetology)
Max speed	5000r/min
Max RCF	4100 ×g
Max capacity	4 × 50ml
Speed accuracy	± 30r/min
Time setting	1min~99min59s
Noise	<65db(A)
Power supply	AC220V 50Hz 10A
Consumption	250w
Dimension(LxWxH)	410mm × 490mm × 310mm
Packing size(LxWxH)	550mm × 580mm × 400mm
Net weight (No rotor)	22kg

INTD5G

Low-Speed Centrifuge



It is a necessary laboratory centrifugal separation instrument for laboratories, hospitals, colleges and universities, etc.

01 Technical Performance

- Beautiful and generous modeling, the use of ABS shell, long service life, easy to clean.
- In order to ensure the safety of users, set the door cover protection switch.
- With high-end models have a quiet, smooth running performance.
- According to the user's needs can set the required speed and time.
- Memory function can store the parameters of the last run.
- Adopting food-grade silicone rubber integral sealing ring, in line with GMP certification. Centrifuges are FDA approved.

02 Technical Parameters

Model	INTD5G
Max speed	4000r/min
Max RCF	1790 ×g
Max capacity	6× 15ml
Speed accuracy	±30r/min
Time setting	1min~60min
Noise	<60db(A)
Power supply	AC220V 50Hz 5A
Consumption	100w
Dimension(LxWxH)	270mm ×270mm ×240mm
Packing size(LxWxH)	320mm ×320mm ×280mm
Net weight (No rotor)	5kg

INTD4X

Blood Washing Centrifuge



Dedicated red blood cell wash/SERO rotor, dedicated lymphocyte wash/HLA rotor, very easy to pick up and load. Microcomputer control, DC brushless motor drive. centrifugation procedures for SERO and HLA rotors have been standardized. Adopting silicone rubber integral sealing ring, the centrifuge obtains FDA approval.

01 Technical Performance

Model	INTD4X	
Rotor Type	Rotor for Lymphatic Ball Cleaning	Rotor for red blood cell cleaning
Rotor Capacity	12×(0.25 -1ml)	12×7ml
Max RCF	2000 ×g	1000 ×g
Speed accuracy	±30r/min	
Control mode	Microcomputer control, DC brushless motor drive	
Time setting	Electronic timing (programmed))	
Noise	<60db(A)	
Power supply	AC220V 50Hz 5A	
Consumption	150w	
Dimension(LxWxH)	330mm ×420mm ×280mm	
Packing size(LxWxH)	430mm ×520mm ×390mm	
Net weight (No rotor)	14kg	

02 Technical Parameters



No.1

- Capacity:12×1.5ml/2.2ml
- Max speed:21000r/min
- Max RCF:30642×g
- Adaptor:0.2ml、0.5ml



No.2

- Capacity:12×5ml
- Max speed:16500r/min
- Max RCF:19175×g
- Adaptor:0.5ml、1.5ml

03 Technical Rotor parameters

Rotor Name	Program number	Max.RCF	Centrifugal time	Usage
No.1 Rotor for Lymphatic Ball Cleaning	1	2000 ×g	180s	Lymphocyte isolation, cultured cell isolation
	2	1000 ×g	3s	Platelet removal (thrombin treatment)
	3	1000 ×g	60s	Lymphocyte cleansing
No.2 Rotor for red blood cell cleaning	1	500 ×g	60s	Blood grouping, observation of blood cell agglutination reaction
	2	1000 ×g	15s	Cross-fit assay, antiglobulin assay
	3	1000 ×g	60s	Cleaning of blood cells, extraction of serum and plasma

INTG12X

Capillary Blood Centrifuge



Capillary blood centrifuge is mainly used for determination of hematocrit value in blood, separation of micro blood and micro solution.

01 Technical Performance

- Microcomputer control, DC brushless motor drive, stable operation, low noise, high accuracy of rotation speed
- Touch panel, programmable operation, host operating parameters can be set according to demand and automatically stored.
- Digital screen display, humanized interface, easy and convenient operation.
- Real-time rpm/RCF readings between the conversion and setting, convenient and quick
- Equipped with electronic door lock, with door cover protection, overspeed and other protection functions; fault automatic alarm function, safe and reliable
- Adopting food-grade silicone rubber integral sealing ring, in line with GMP certification. The centrifuge is FDA certified.

02 Technical Parameters

Model	INTG12X
Max speed	12000r/min
Max RCF	13500 ×g
Max capacity	24 capillary tubes
Speed accuracy	±30r/min
Time setting	1min~99min
Noise	<65db(A)
Power supply	AC220V 50Hz 10A
Consumption	250w
Dimension(LxWxH)	230mm ×310mm ×240mm
Packing size(LxWxH)	290mm ×400mm ×330mm
Net weight (No rotor)	9kg

03 Technical Rotor parameters



No.1

- Capacity:24 capillary tubes
- Max speed:12000r/min
- Max RCF:13500×g



No.2

- Capacity:12 capillary tubes
- Max speed:12000r/min
- Max RCF:13500×g

INTD5GL

Low-Speed Filtration Centrifuge



Filtration centrifuges, which can separate solid particles of different diameters by selecting different filter media, can separate solid particles up to 1 μ m in diameter and obtain a high degree of dryness.

01 Technical Performance

- Microcomputer control, DC brushless motor drive, stable operation, low noise, high speed accuracy.
- Touch panel, programmable operation, host operating parameters can be set according to demand and automatically stored.
- LCD display, humanized interface, easy and convenient operation.
- Real-time rpm/RCF reading conversion and setting, convenient and quick.
- Equipped with electronic door lock, with door cover protection, overspeed and other protection functions; fault automatic alarm function, safe and reliable.
- All stainless steel rotating cylinder, filter cylinder and pipeline, set washing, dehydration, concentration, filtration of several major functions in one.
- High efficiency, solving the problem of low efficiency of pressure filtration and vacuum filtration.
- Adopting food-grade silicone rubber integral sealing ring, in line with GMP certification. The centrifuge has obtained FDA certification.

02 Technical Parameters

Model	INTD5GL
Max speed	5000r/min
Max RCF	2320 ×g 1830 ×g
Max capacity	2000ml 1000ml
Speed accuracy	±30r/min
Time setting	1s~99min59s
Noise	<65db(A)
Power supply	AC220V 50Hz 10A
Consumption	450w
Dimension(LxWxH)	460mm ×540mm ×340mm
Packing size(LxWxH)	550mm ×630mm ×430mm
Net weight (No rotor)	28kg

INTG10K/INTD6K/INTD4K Mini-Centrifuge



01 Technical Performacne

- Electrostatic technology, ultra-low noise operation, maintenance-free motor, durable, safe and reliable.

02 Technical Parameters

Model	INTG10K	INTD6K	INTD4K
Max speed	10000r/min	6000r/min	4000r/min
Max RCF	5000 ×g	2000 ×g	900 ×g
Capacity	2 PCR Line ×8×0.2ml		
Noise	<48db(A)		
Power supply	AC220V 50Hz		
Consumption	30w		
Dimension(LxWxH)	189mm ×161mm ×122mm		
Packing size(LxWxH)	330mm ×250mm ×210mm		
Net weight (No rotor)	1kg		

INTG10K/INTD6K/INTD4K Mini-Centrifuge(Updated model)



01/ Technical Performance

- Adopting advanced and reliable PI high-frequency full-range wide-range power control program, in line with the AC100-250V/50/60Hz input power supply, can more accurately control the voltage, current, speed and relative centrifugal force, to ensure that its constant speed will not change with the voltage or load changes.
- Unique rotary head snap-on installation design, without any tools that can easily replace the rotary head so that the experimental staff to replace the rotary head more convenient and rapid
- High-strength host and rotary head material, can resist a variety of chemical corrosion, the rotary head has a high-temperature sterilization function
- Adopt high efficiency DC permanent magnet motor, RSS material shock absorption, running more smoothly, rotating space for 360 ° arc, no angle, wind resistance is small, temperature rise is small, ultra-quiet
- Faster acceleration / deceleration rate, in a shorter time to complete the experiment required, acceleration within 3 seconds to reach 95% of the rated speed; deceleration of more humane sub-two, press the door button that is free to stop (≤ 15 seconds), open the cover to open all the brakes that is decelerated (≤ 3 seconds)
- Adopting food-grade silicone rubber integral sealing ring, in line with GMP certification. The centrifuge obtains the U.S. FDA certification

02 Technical Parameters

Model	INTG10K	INTD6K	INTD4K
Power supply	AC100 -250V 50/60Hz		
Consumption	25w	18w	12w
Motor	DC24V/DC permanent magnet motor		
Control Mode	PI Power Direct Drive		
Power Fuse	PPTC/Resettable fuse/no replacement required		
Rotor Capacity	Angle rotor: 2ml/1.5ml/0.5ml/0.2ml ×8 holes PCR tube rotor: 0.2ml × 8 holes × 4 lines Composite Rotor: 1.5ml ×6 holes+0.5ml ×6 holes+0.2ml ×8 holes ×2lines		
Max speed	10000r/min	7000r/min	4000r/min
Max RCF	5610 ×g	2910 ×g	990 ×g
Dimension(LxWxH)	155mm × 168mm × 118mm		
Net weight (No rotor)	1.1kg		
Noise	<48db(A)	<43db(A)	<40db(A)
Power supply	AC220V 50Hz		
Maximum acceleration time	≤ 3s		
Fastest deceleration time	≤ 3s		
Protection Class	IP20		
Permissible ambient temperature/relative humidity	5~40 °C /80%		
Interference Suppression Standard	EN 61010 -1,EN 61010 -2, EN61326 -1, EN 61010 -3-2/A2		

INMiniL-12G

High-Capacity Mini Centrifuge



Adopting international advanced design concepts and manufacturing technology, smooth and beautiful appearance, compact and solid structure, adhering to the high degree of versatility, easy operation and other advantages, and at the same time has a “smooth start” and “smooth braking” functional characteristics of the centrifuge; the mini centrifuge is very suitable for micro-tube filtration and rapid centrifugation, micro-volume blood cell separation, microbial sample processing PCR laboratory partition centrifugation, preventing the liquid in the tube hanging on the wall. The centrifuge is very suitable for microtube filtration and rapid centrifugation, micro blood cell separation, microbial sample processing PCR experiments partition centrifugation, to prevent the liquid in the centrifuge tube hanging wall phenomenon, is the first choice to deal with small batch centrifugal samples.

01 Technical Performance

- Advanced and reliable PI high-frequency full-range wide-range power control program, in line with the power grid around the world, through the 16-bit MCU computing PWM speed control can be more accurate control of voltage, current, speed and effective centrifugal time, to ensure that it is in the harsh use of the environment, and to prolong the service life of the motor and electromagnetic noise.
- Reliable and durable DC permanent magnet motor, speed range is wider 500~12000rpm, accuracy $\pm 9\%$; centrifugal speed incremental adjustment of 500rpm, effective centrifugal time range: 1-99 minutes or 1-59 seconds.
- Faster acceleration/deceleration rate, complete the experiments in a shorter time.
- High-strength host and rotary head material, can resist various chemical corrosion, rotary head with high temperature sterilization function.
- Unique rotary head snap-on installation design, without any tools that can be convenient to replace the rotary head, so that the experimental staff to replace the rotary head is more convenient and fast.
- The novel composite test tube head can be compatible with a variety of test tubes, without the need to replace the head to meet the basic needs of the experiment
- RSS material shock absorption, running more smoothly, rotating space position 360° , no angle, wind resistance, temperature rise of small ultra-quiet machine noise $\leq 60\text{dB}$
- Door cover protection, overspeed and imbalance detection system, you can monitor the centrifugal process in real time to ensure the safe operation of the instrument, the end of the operation, error and imbalance, the sound signal prompts, while stopping the operation of the LCD display the results of the code
- Adopting food-grade silicone rubber integral sealing ring, in line with GMP certification. The centrifuge obtains the U.S. FDA certification.

02 Technical Parameters

Model	INMiniL -12G
Power supply	AC100 -250V 50/60Hz
Power Fuse	PPTC/Resettable fuse/no replacement required
Consumption	45w
Control Mode	ST 16-bit MCU/PWM/Speed Regulation
Display Mode	LCD liquid crystal with white characters on black background
Motor	DC24V/DC permanent magnet motor
Effective centrifugation time	1-99min/1 -59sec.
Speed	500~12000r/min \pm 9%
RPM increase	500rpm
Max RCF	9660 \times g
Misoperation/fault alarms	Sound Alert + Display Code
Noise	<60db(A)
Maximum acceleration time	\leq 13s
Fastest deceleration time	\leq 16s
Protection Class	IP20
Permissible ambient temperature/relative humidity	+5~40 $^{\circ}$ C /80%
Interference Suppression Standard	EN 61010 -1,EN 61010 -2, EN61326 -1, EN 61010 -3-2/A2
Dimension(LxWxH)	194mm \times 229mm \times 120mm
Packing size(LxWxH)	335mm \times 325mm \times 185mm
Net weight (No rotor)	1.6kg

INTG12K

Mini-Centrifuge



01/ Technical Performance

- Adopting advanced and reliable PI high-frequency full-range wide-range power control program, in line with the AC100-250V/50/60Hz input power supply, can more accurately control the voltage and current, rotational speed and relative centrifugal force, to ensure that its constant speed will not change with the voltage or load changes.
- Unique rotary head snap-on installation design, without any tools that can easily replace the rotary head so that the experimenter to replace the rotary head more convenient and fast.
- High-strength host and rotary head material, can resist various chemical corrosion, rotary head with high-temperature sterilization function.
- Adopt high efficiency DC permanent magnet motor, RSS material shock absorption, running more smoothly, the rotating space is 360 ° arc. No angle, small wind resistance, small temperature rise, ultra-quiet, the noise of the whole machine $\leq 50\text{dB(A)}$
- Faster acceleration / deceleration rate, in a shorter period of time to complete the experiments required to accelerate within 3 seconds to reach the rated speed of more than 95%; deceleration of a more humane division of 2 kinds, press the open door button that is free to stop (≤ 15 seconds), open the cover all open that is the brake deceleration (< 3 seconds)
- Adopting food-grade silicone rubber integral sealing ring, in line with GMP certification. Centrifuge obtains FDA certification

02 Technical Parameters

Model	INTG12K
Power supply	AC100 -250V 50/60Hz
Consumption	30w
Motor	DC24V/DC permanent magnet motor
Control Mode	PI Power Direct Drive
Power Fuse	PPTC/Resettable fuse/no replacement required
Rotor Capacity	Angle rotor: 2ml/1.5ml/0.5ml/0.2ml ×8 holes
Max.Speed	12000r/min
Max RCF	8550 ×g
Dimension(LxWxH)	155mm × 168mm × 118mm
Net weight (No rotor)	1.1kg
Noise	<50db(A)
Maximum acceleration time	≤ 8s
Fastest deceleration time	≤ 10s
Protection Class	IP20
Permissible ambient	+5~40 °C /80%
Interference Suppression Standard	EN 61010 -1,EN 61010 -2, EN61326 -1, EN 61010 -3-2/A2

INTD4A

Tabletop Low-Speed Centrifuge

Small size and low noise. It is the preferred instrument for small volume separation in hospitals, scientific research units and institutions of higher learning at all levels.



01 Technical Performance

- Microcomputer control, DC brushless motor drive, smooth and quiet operation.
- Touch panel, programmable operation, parameters can be changed at any time during operation without stopping.
- Real-time rpm/RCF reading conversion and setting, convenient and quick.
- Equipped with door cover protection, overspeed and other protection functions, fault automatic alarm function, safe and reliable.
- Beautiful appearance, compact size, beautiful and generous, with industrial ABS shell, long life, easy to clean.
- The use of food-grade silicone rubber integral sealing ring, in line with GMP certification. Centrifuge to obtain U.S. FDA certification.

02 Technical Parameters

Model	INTD4A
Max speed	4000r/min
Max RCF	1980 ×g
Max capacity	8×20ml
Speed accuracy	±30r/min
Time setting	1min~99min
Noise	<65db(A)
Power supply	AC220V 50Hz 2A
Consumption	100w
Dimension(LxWxH)	310mm ×260mm ×220mm
Packing size(LxWxH)	370mm ×320mm ×280mm
Net weight (No rotor)	14kg

03 Technical Rotor parameters



No.1

- Capacity:12×7ml
- Max speed:4000r/min
- Max RCF:1980×g



No.2

- Capacity:6×15ml
- Max speed:4000r/min
- Max RCF:1980×g



No.3

- Capacity:8×15ml
- Max speed:4000r/min
- Max RCF:1980×g



No.3

- Capacity:8×20ml
- Max speed:4000r/min
- Max RCF:1980×g



No.3

- Capacity:12×10ml
- Max speed:4000r/min
- Max RCF:1980×g

INL5M

Microplate Centrifuge

Microplate centrifuge adopts international advanced design concept and manufacturing technology, smooth and beautiful appearance, compact and solid structure, adhering to the advantages of high versatility, easy operation, etc., at the same time with “smooth start” and “smooth braking” function characteristics of the centrifuge. This microtiter centrifuge is very suitable for 96-well or 384-well and small-volume microtiter plates, as well as skirted and unskirted microtiter plates and all kinds of standard PCR microtiter plates.

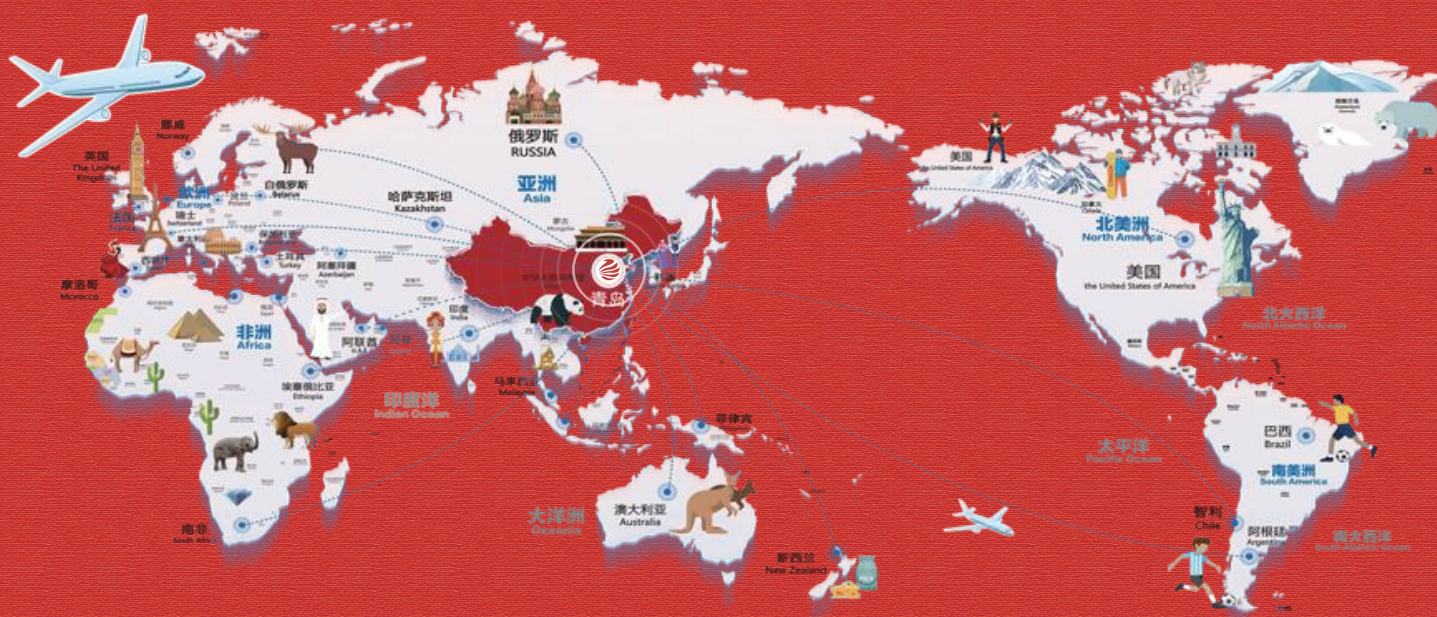


01/ Technical Performance

- Instantaneous centrifugation function rises to the highest speed in about 6 seconds, can quickly leave the walled droplets; faster acceleration and deceleration rate, in a shorter period of time to complete the experiments required
- Door cover protection, overspeed and imbalance detection system, can monitor the centrifugation process in real time to ensure the safe operation of the instrument.
- The sound signal prompts the end of operation, error and imbalance, and stops the operation at the same time, and the LCD displays the result code.
- Adopt food-grade silicone rubber integral sealing ring, in line with GMP certification. The centrifuge obtains the U.S. FDA certification

02 Technical Parameters

Model	INL5M
Power supply	DC24V 7.5A
Consumption	45w
Motor	DC24V/DC permanent magnet motor
Display Mode	High brightness LCD
Effective centrifugation time	1-99min/1 -59sec.
Speed	300~3000r/min ± 15 rpm
RPM increase	10rpm
Max Capacity	2 pcs 96 holes microplate
Max RCF	608 $\times g$
Misoperation/fault alarms	Sound Alert + Display Code
Sample loading method	Place vertically down
Noise	<60db(A)
Maximum acceleration time	≤ 6 s
Fastest deceleration time	≤ 5 s
Protection Class	IP20
Permissible ambient temperature/relative humidity	+5~40 $^{\circ}C$ /80%
Interference Suppression Standard	EN 61010 -1, EN 61010 -2, EN61326 -1, EN 61010 -3-2/A2
Dimension(LxWxH)	225mm \times 255mm \times 215mm
Packing size(LxWxH)	350mm \times 300mm \times 315mm
Net weight (No rotor)	3.9kg



Qingdao Innova Bio-Meditech Co., Ltd

Add.: No. 176 Jufeng Road, 266199, Qingdao, China

Tel.: +86 532 8789 0634

Email: info@innobiomed.com

Web: www.innovabiomed.com

